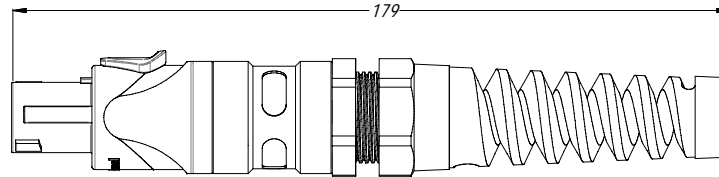
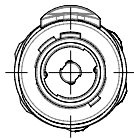
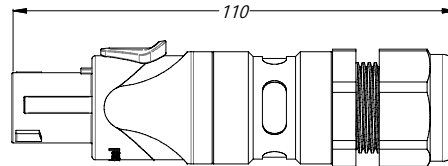
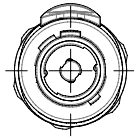


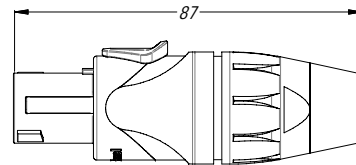
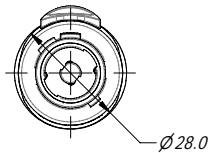
REVISION HISTORY					
REV	ZONE	DESCRIPTION	DATE	BY	ECN
1		FIRST RELEASE	30/11/11	T.N	9068



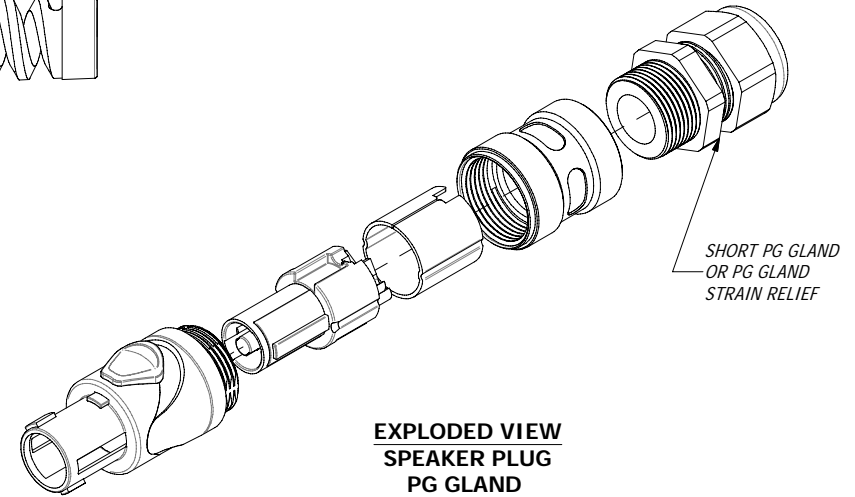
**SPEAKER PLUG
PG GLAND STRAIN RELIEF**



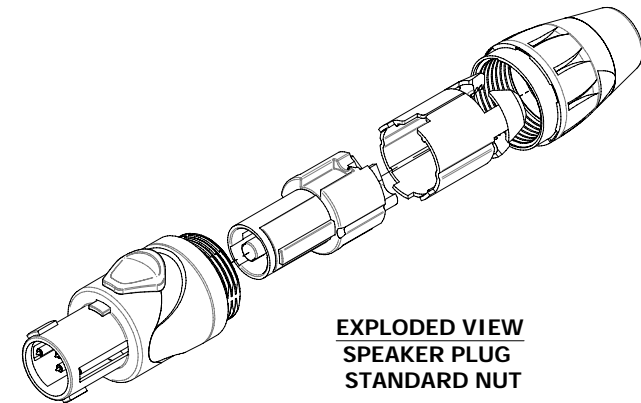
**SPEAKER PLUG
PG GLAND**



**SPEAKER PLUG
STANDARD NUT**



**EXPLODED VIEW
SPEAKER PLUG
PG GLAND**



**EXPLODED VIEW
SPEAKER PLUG
STANDARD NUT**

PART NUMBER BREAKDOWN

SP-	2-	F	B	S	G	6	B
SERIES DESIGNATION	POLES 2 CONTACTS: 2 4 CONTACTS: 4	TYPE: CABLE STRAIGHT: F CABLE RIGHT ANGLE: FR	SHELL FINISH: PLASTIC BLACK: BLANK METAL BLACK: B METAL NICKEL: N	TERMINATION BLANK: SCREW S: SOLDER	CLAMP OPTION BLANK: STANDARD NUT G: PG GLAND L: PG GLAND STRAIN RELIEF LONG		PACKAGING: BLANK: BAGS B: BULK
							NUT COLOUR: BLANK: BLACK 1: BROWN 2: RED 3: ORANGE 4: YELLOW 5: GREEN 6: BLUE 7: VIOLET 8: GREY 9: WHITE

UNLESS OTHERWISE SPECIFIED TOLERANCE TO BE		THIS DOCUMENT IS THE PROPERTY OF AMPHENOL AUSTRALIA PTY. LTD. NO PART THEREOF MAY BE REPRODUCED AND USED WITHOUT THE PRIOR WRITTEN CONSENT OF THE OWNER				Amphenol Amphenol Australia Pty.Ltd, 2 Fiveways Blvd, Keysborough, VIC 3173	
LINEAR	ANGULAR	MATERIAL: SEE COMPONENTS		DRN: T.N	DATE: 30/11/11	TITLE: LOUD SPEAKER CONNECTOR PLUG SP SERIES	PART No: SEE P/No BREAKDOWN
X ± 0.5 X.X ± 0.1 X.XX ± 0.05	X° ± 1 X.X° ± 30° X.XX° ± 15°	BREAK ALL SHARP EDGES AND REMOVE ALL BURRS		CKD: P.M	DATE: 30/11/11	DRAWING NO.	
DO NOT SCALE		FINISH:		APPD: P.M	DATE: 30/11/11	SHEET	
DIMENSIONS IN MILLIMETRES		THIRD ANGLE PROJECTION		SCALE: NTS	SIZE: A3	CAD FILE: 55010772000211	55010772-000-2 2/2