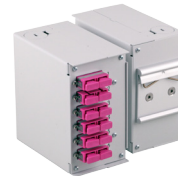


DATASHEET

Industrial splice distributor with metal housing for DIN-RAIL, unassembled



FA2027

6 x SC-duplex front plate
(for SC, LC, ST adapter)

adapters and front plate not included

Specifications

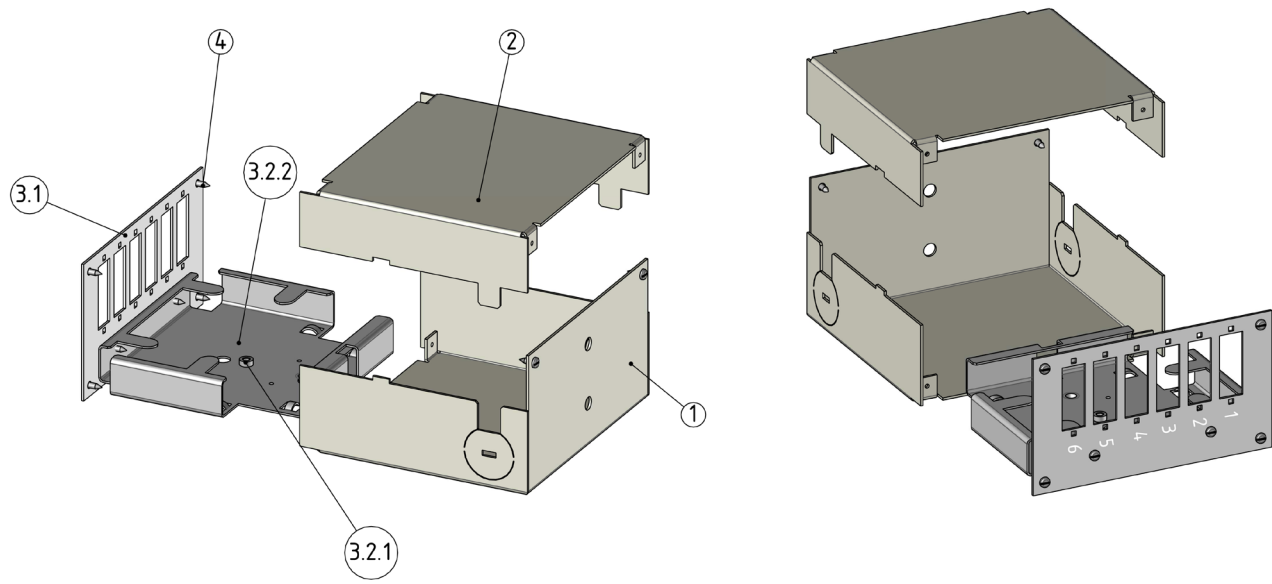
- Rugged metal housing
- DIN Rail holder with screw set included
- Incl. splice cassette, splice holder and 1 x cable gland M20
- Dimensions (W x H x D): 61 x 115 x 113 mm



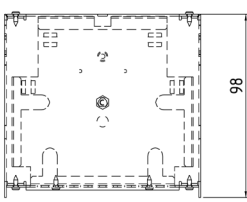
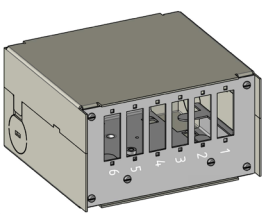
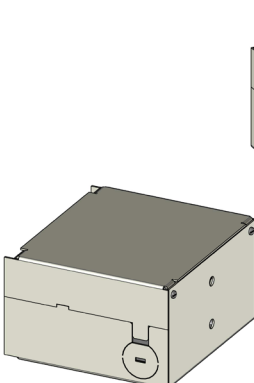
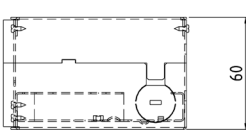
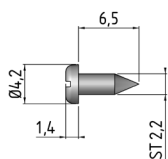
DATASHEET

Industrial splice distributor with metal housing for DIN-RAIL, unassembled

Drawings/ Figures



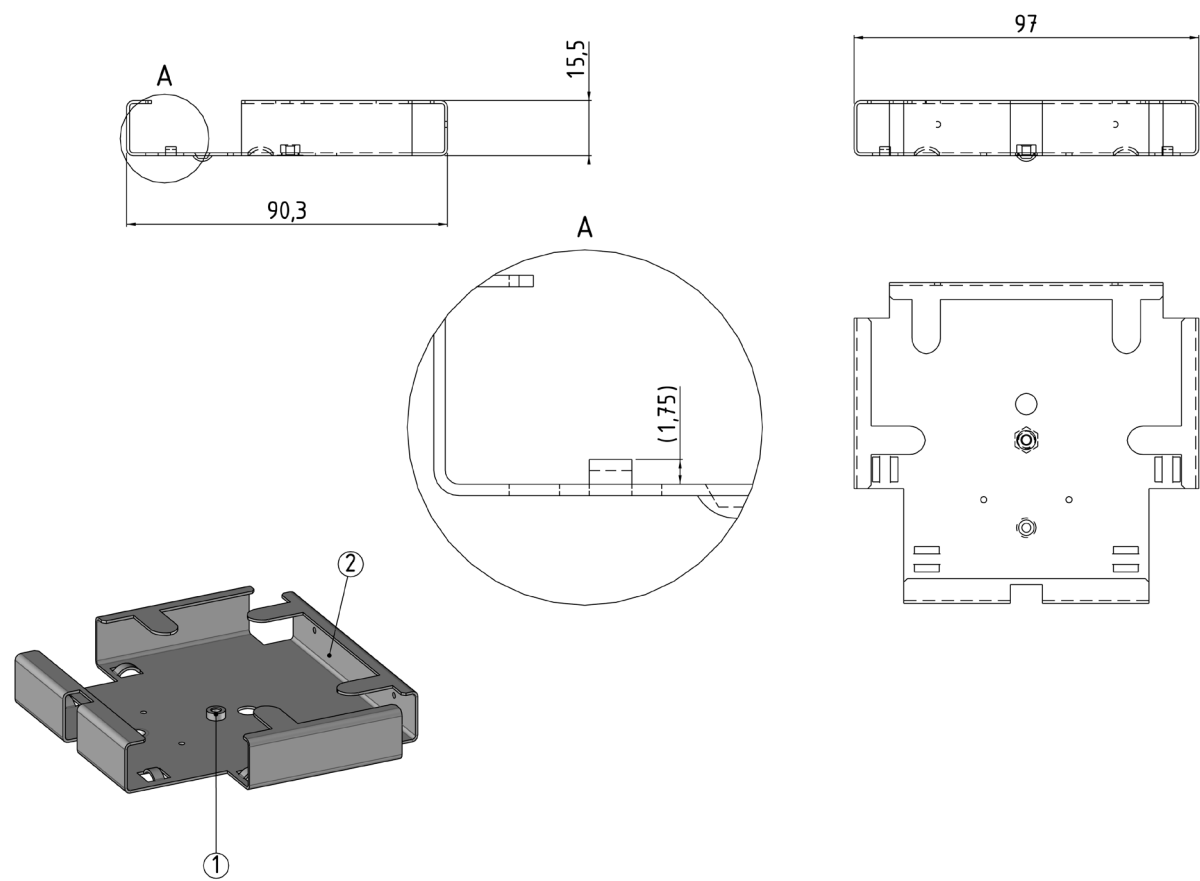
No.	Description	Q'ty
1	Housing (part 1)	1
2	Housing (part 2)	1
3.1	Front plate (not included in delivery)	
3.2.1	Rivet	1
3.2.2	Mounting plate	1
4	Pan head tapping screws	8



DATASHEET

Industrial splice distributor with metal housing for DIN-RAIL, unassembled

Drawings/ Figures



No.	Description	Q'ty
1	Rivet	1
2	Mounting plate	1

Order Data

Art.-No.	Type
FA2026	Industrial splice distributor with metal housing for DIN-RAIL, unassembled
Art.-No.	Accessories
FA2027	Front panel for 6 x SC duplex, LC quad or ST duplex

