



Getting the message across



MINICOM DS

DS Vision 3000

DIGITAL SIGNAGE DISTRIBUTION SYSTEMS

**The ultimate in player-to-screen
distribution and control**

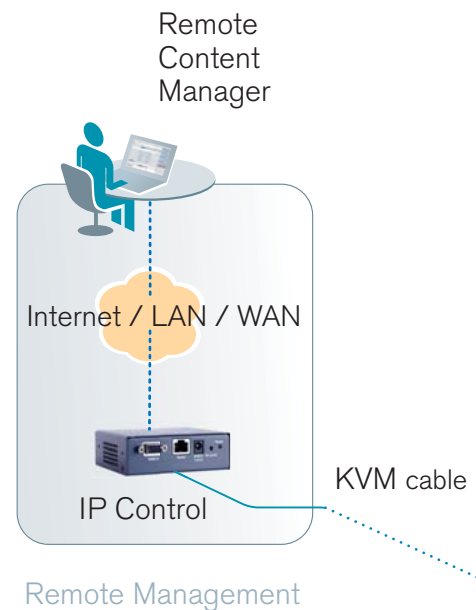
The test of any digital signage network

is whether it can deliver rich multimedia content from player to distant screens while maintaining perfect image and sound quality, every time.

The leading solution in real-time multimedia delivery, DS Vision 3000 distributes high-definition video and stereo-audio from a single player, over CAT5/6/7 cable, to multiple plasma or LCD screens located up to 600m/2000ft away.

As a long-range system the DS Vision is ideal for distributing multimedia content in:

- **Shopping centers**
- **Transportation hubs**
- **Hotels/restaurants/clubs**
- **Educational facilities**
- **Corporate environments**



Boost exposure while reducing equipment costs

Multiply the number of screens carrying your message without adding additional players. Instead of multiple players each with their own software, transmit your message from a single player to up to hundreds of screens.

- Lower your software & content licensing
- Eliminate unnecessary hardware
- Simplify maintenance by servicing a single player instead of dozens

The DS Vision packs a 3-in-1 punch – audio and video broadcasting and serial management channels all in one box. Broadcasting is in high definition video at 1080p, 1920x1200@60Hz. And a DDC protocol optimizes player-screen interaction for the best visual experience.

Any configuration

The DS Vision supports any installation configuration from star to daisy chain. With the Dual Cascade Receiver unit you can even broadcast to two back-to-back screens using a single receiver while still controlling each screen separately.

The freedom to put screens where you want and players where you need them

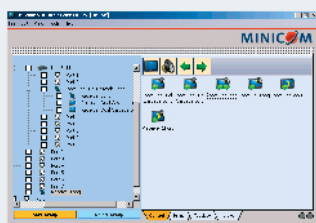
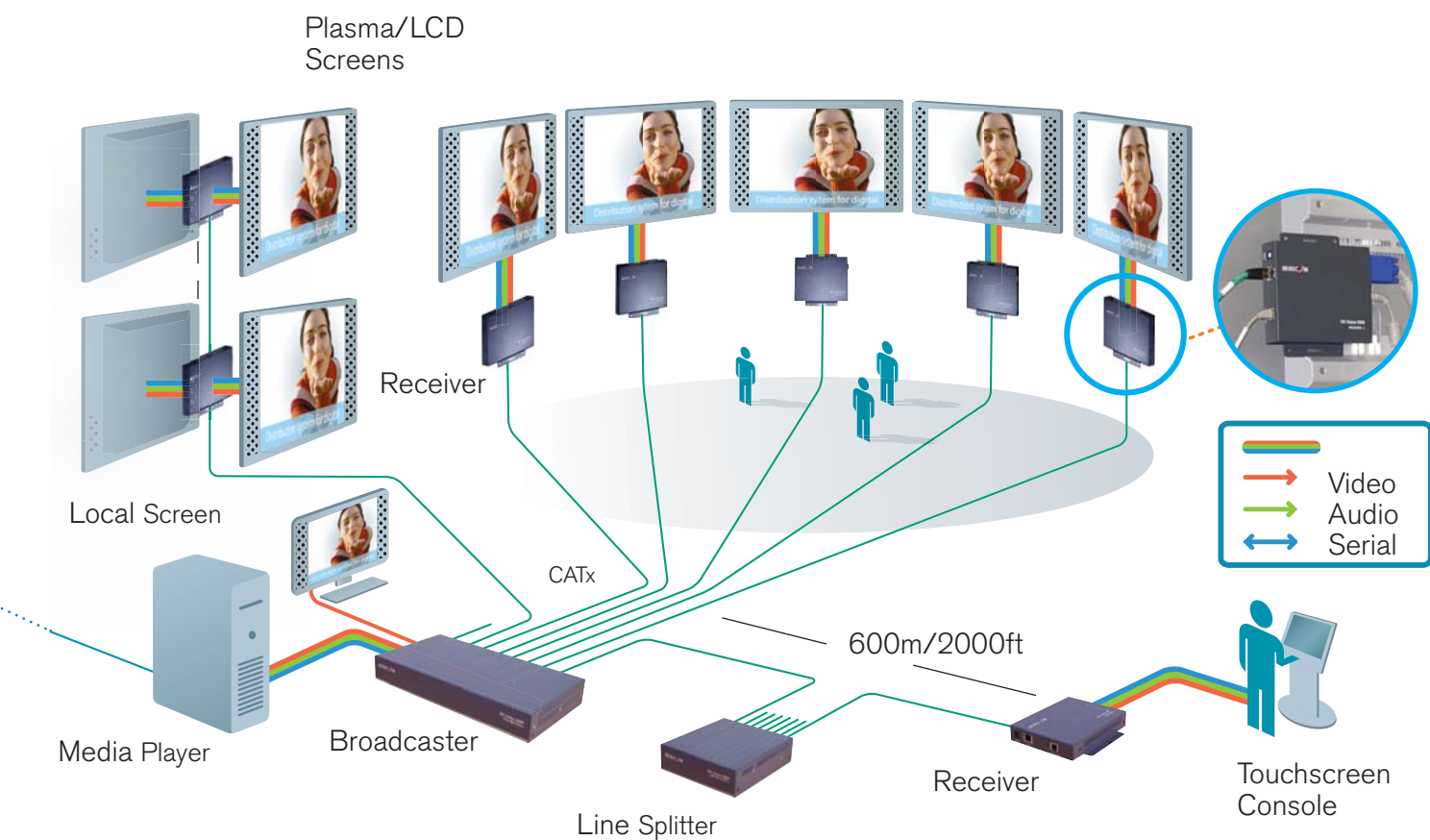
The DS Vision distributes multimedia content over 600m/ 2000ft allowing you to:

- Place your screens wherever you want, in the most optimal locations to achieve the widest public coverage and reach the most customers
- Place your players out of sight and out of harms way where they can easily be used, serviced and maintained

Double your screen life

The only system on the market to include fully bi-directional RS-232 communication, DS Vision enables you to not only send a command but also query the screen and get a response.

- Remotely view screen status instead of walking from screen to screen
- Remotely turn screens on/off
- Remotely monitor screen operation time. You'll prevent overheating and double or triple screen life
- Remotely increase volume and brightness
- Connect and extend serial devices such as touch screens



Superior management

Take full control of your digital signage network with the industry's only "last mile" GUI based management program. Now you can manage not only your content but also your screens.

- **Advanced GUI** - The simple intuitive functionality will have you controlling the system before even opening the manual
- **Individual Screen Name Tagging** - Quickly & easily identify individual screens in multi-screen networks
- **Auto-Detect** - Obtain full topology reports instantly
- **Grouping** - Categorize your screens by group and with a click of the mouse perform an action on dozens of screens simultaneously
- At closing time shut indoor screens while leaving outdoor screens running to continue advertising to passerby's on the street. You'll reduce screen running expenses and extend screen life
- Darken all malfunctioning screens instead of leaving a blue screen during maintenance

Accelerated installation via export settings

Reduce and simplify your installation time with the system's Save Configuration Settings function.

- Configure before installation so you are up and running as soon as screens are installed
- After installation export your configuration settings to other similar locations (i.e. store branches)
- Saving Configuration Settings also enables faster system recovery and easier system maintenance

Overall single system control

DS Vision's open protocol can be integrated with your current management system so you can control all your Digital Signage equipment from a single management system.



Simplify tuning with digital skew export

Stop walking from screen to screen to fix the image. With the digital skew function you can export skew parameters of a perfect screen to others. For tuning of preliminary screens, use the handy tuning unit – a handheld device you can operate from floor level while looking at the screen.

DS Vision 3000

The most comprehensive digital signage distribution system combining:

- 600m/2000ft range
- Three in one transmission: video, audio, serial
- High definition video broadcasting
- Stereo audio
- Full player-to-screen management (RS-232)
- Bi-directional control
- User-friendly GUI

Technical specifications

| | |
|-----------------------------------|---|
| Resolution | Up to 1920x1200 @ 60Hz; 1080p (depending on cable length) |
| Input/Output Video Signals | Analog signal red, green, blue 0.7v p-p 75 Ohm |
| Sync | TTL compatible |
| Horizontal/Vertical Sync Polarity | Positive/Negative |
| System Cable | CAT5,5e,6,7 UTP/ FTP cable 2x4x24 AWG Solid Wire |
| Maximum Distance | 600m/2000ft |
| Skew Compensation | Up to 63 n sec |
| DDC | Complies with VESA DDC-2 specification |
| RS-232 Connection | Full serial = RXD, TXD, DTR, DSR, RTS, CTS |
| Serial Baud Rate | 57,600 |
| Audio | Stereo |
| Operating Temperature | 5°C to 40°C / 41°F to 104°F |
| Storage Temperature | -40°C to 70°C / -104°F to 158°F |
| Warranty | 3 Years |

| | Broadcaster 1/8/16 | Line Splitter/ Line Splitter Long | Receiver/Receiver Long | Receiver DCL | Video Tuner |
|---------------------|--|--|---|--|---|
| Cables & Connectors | Video In - HDD15M Video Out - HDD15F Stereo audio In/Out - Jack 3.5mm Serial In - DB9F Serial Local - DB9M System Out - 1/8/16 RJ45 Control - RJ11 Power LED - Green (in front) | System In - RJ45 System Out - RJ45 Tuning - RJ11 Power LED - Green (in front) | System In - RJ45 Video - HDD15F Audio - 3.5 Jack L,R, L&R Serial - DB9M Tuning - potentiometer/ RJ11 Power LED - Green (on RJ45) | System In - RJ45 System Out - RJ45 Video - 2 x HDD15F Audio - 2x 3.5 Jack , L&R Serial - 2 X DB9M Tuning- RJ11 Power LED - Green (on RJ45) | To Receiver - RJ11 Tuning - 3 button |
| Dimensions | 292.5x153.6x41.5 mm Transmitter 142.5x153.6 x41.5 mm | 138x153.6x41.5 mm | 147x145x26 mm (including mounting) | 152x145x26 mm (including mounting) | 93.7x62.1x28 mm |
| Power | External Adaptor 5VDC 2.5A | External Adaptor 5VDC 2.5A | External Adaptor 5VDC 1/2.5A | External Adaptor 5VDC 2.5A | From Receiver |
| Order Number | Broadcaster 8 0VS50003 Broadcaster16 0VS50004 Transmitter 1 0VS50005 | Line Splitter 0VS50009 Line Splitter Long 0VS50002 | Receiver 0VS50010 Receiver Long 0VS50001 | Receiver DCL (Dual Cascade Long) 0VS50006 | Video Tuner 0VS50008 |