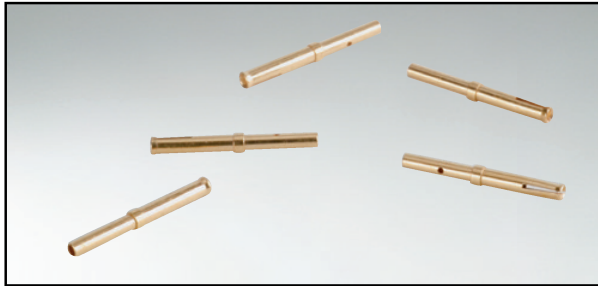


D-SUB HIGH DENSITY

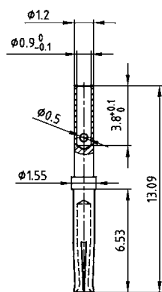
Crimp Contacts – Screw machine design – For wire size AWG 22



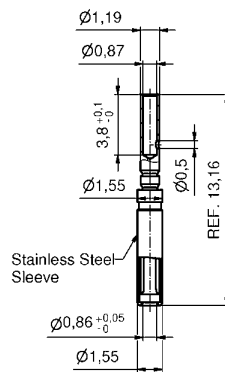
RoHS compliant – CSA listed, File No.:LR115001 –UL listed, File No.:E202784

FEMALE CONTACT

Standard version



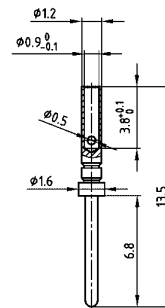
Closed entry version



DESCRIPTION

- For wire size **AWG 22**
- Loose contacts, in poly bag (500 pieces)
- Quality class 3 (also available in quality class 1)

MALE CONTACT



Technical Data

Contact material	Precision machined contacts	Brass
Contact plating		Gold plated over nickel
Temperature range		-55°C to +125°C
Rated current for AWG 24		3 A
Contact resistance		≤ 10 mΩ

ORDER DATA

FEMALE CONTACTS	
Contact type	Part Number
AWG 22 / Loose contact	162 A 18419 X
AWG 22 / Loose contact closed entry version	16-000693

MALE CONTACTS	
Contact type	Part Number
AWG 22 / Loose contact	161 A 18009 X