

USB 3.0 to SATA Enclosure

User's Manual

Safety Instructions

Always read the safety instructions carefully.

- Keep this User's Manual for future reference.
- Keep this equipment away from humidity.
- If any of the following situation arises, get the equipment checked by a service technician:
 - The equipment has been exposed to moisture.
 - The equipment has been dropped and damaged.
 - The equipment has obvious sign of breakage.
 - The equipment has not been working well or you cannot get it to work according to the User's Manual.

Copyright Statement

No part of this publication may be reproduced in any forms without the prior written permission. Other trademarks or brand names mentioned herein are trademarks or registered trademarks of their respective companies.

Disclaimer

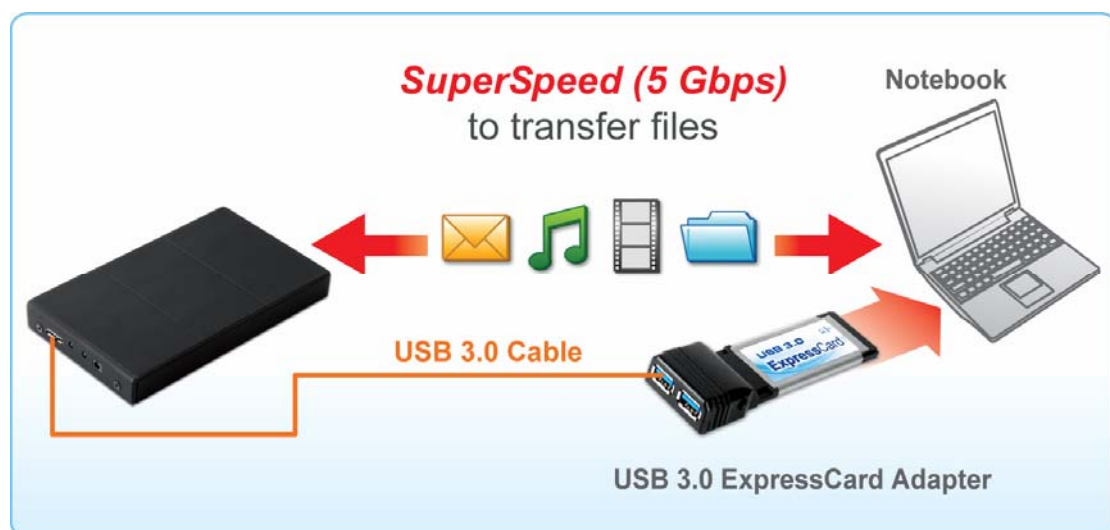
Information in this document is subject to change without notice. The manufacturer does not make any representations or warranties (implied or otherwise) regarding the accuracy and completeness of this document and shall in no event be liable for any loss of profit or any commercial damage, including but not limited to special, incidental, consequential, or other damage.

Table of Contents

1. Introduction	4
Features.....	4
Package Contents.....	5
System Requirements.....	5
LED Status	5
2. Installation	6
A. Hare Drive Installation	6
B. Verify Installation	9
C. Removing the Enclosure	11
3. Specifications	11
4. Regulatory Compliance	12
FCC Conditions	12
CE.....	12
WEEE Information.....	12

1.Introduction

The USB 3.0 to SATA enclosure is an ultra and durable USB 3.0 device for you to connect hard drives of USB 3.0. It is a brand new solution to carry large multimedia with 2.5" HDD enclosure. The enclosure is quality designed and featuring unique appearance.



Features

- Compliant with Super-Speed USB 3.0 specification.
- Transfer rate of Super-Speed USB 3.0 interface can be up to 5 Gbps (Max).
- Compliant with the SATA/SATA II
- Support 2.5" hard drives.
- Plug & play.

Package Contents

- USB 3.0 to SATA Enclosure x1
- User's Manual x1

System Requirements

- Windows® XP, Vista™, Windows® 7

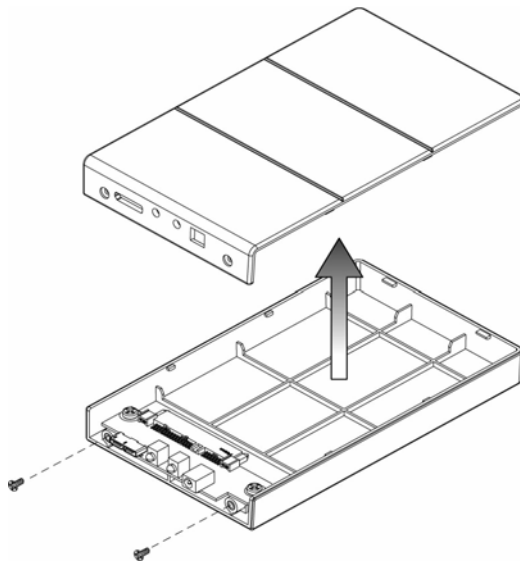
LED Status

Status	Description
Green	Lights up when power on.
Blue	Blinking when there is data flow.

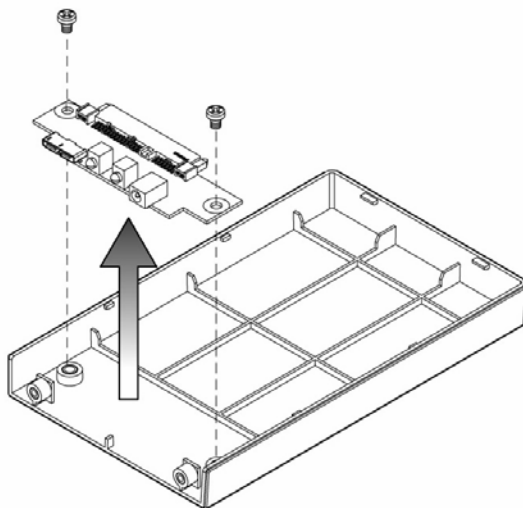
2. Installation

A. Hard Drive Installation

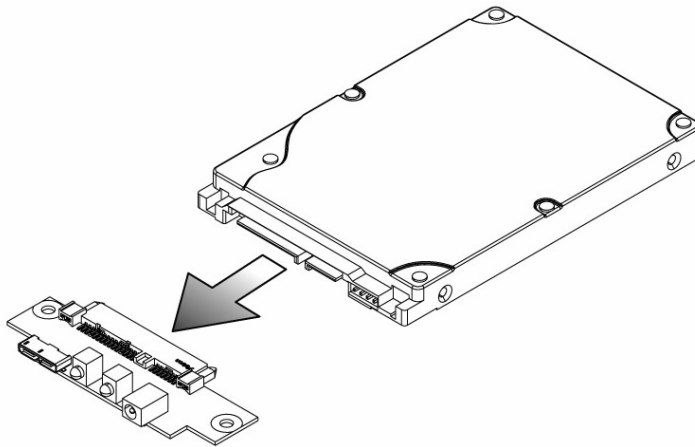
1. Unscrew and remove the case plates.



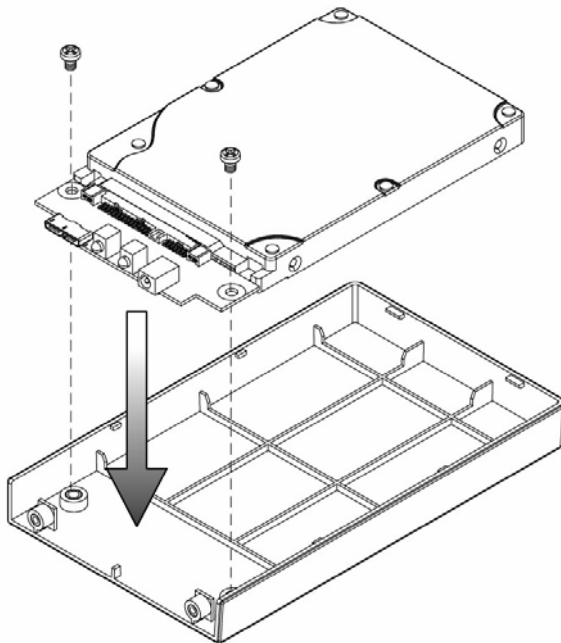
2. Unscrew the USB 3.0 to SATA board from the case frame.



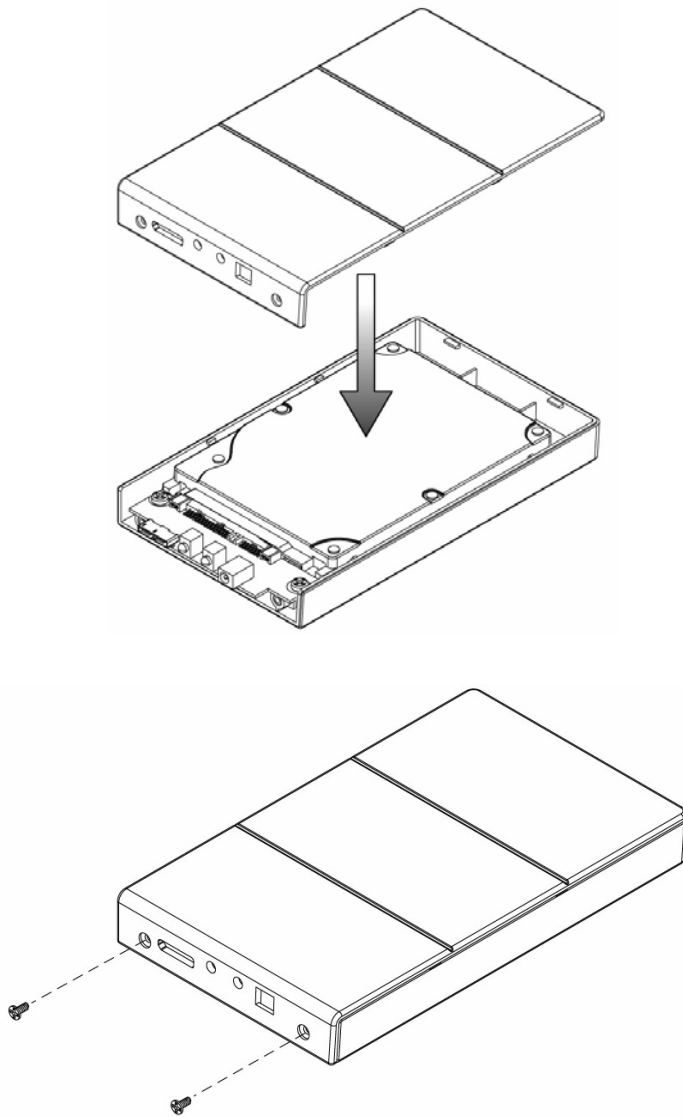
3. Connect the Hard Disk onto the USB 3.0 to SATA board.



4. Put and install the Hard Disk connected with USB 3.0 to SATA board onto the case frame. Make sure the connectors and LED indicators are properly aligned with the case frame and secure the Hard Disk on the case frame with screws.



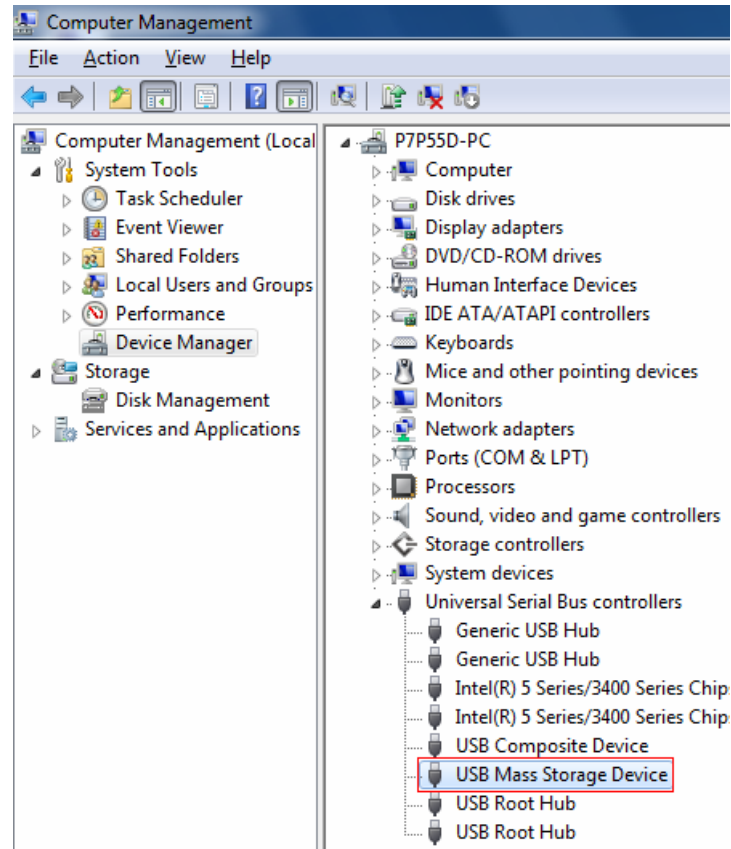
5. Place the case plates back on the case frame and secure it with screws.



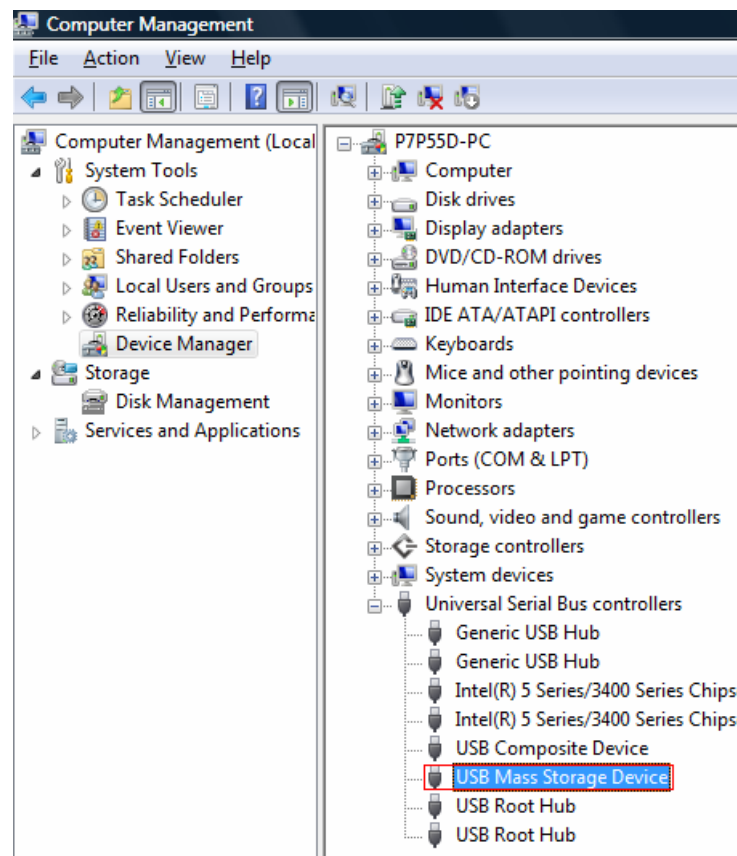
B. Verify Installation

To verify your installation, right click **My computer** > **Manage** > **Device Manager**> **Universal Serial Bus controllers**> **USB Mass Storage Device**.

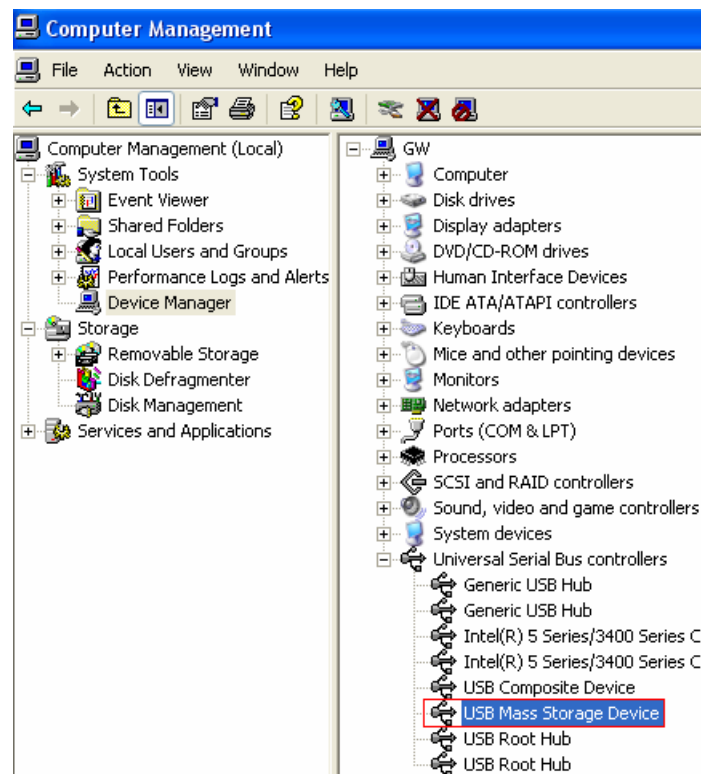
On Windows 7:



On Windows Vista:



On Windows XP:



C. Removing the Enclosure

1. Close any windows and programs pertaining to the USB 3.0 to SATA Enclosure.
2. Double click the “Safely Remove Hardware” icon in the system tray and select “Safely Remove USB Mass Storage Device” .



3. Select the device you wish to remove and click on “Stop” . The system should prompt, “It is now safe to remove the USB device” .

3. Specifications

Item	Description
Data Rate	Up to 5Gbps
Compliance	USB 1.1, USB 2.0 & USB 3.0
Operating Systems	Windows [®] XP, Vista [™] , Windows [®] 7
Max Distance	3 meters
Housing Material	Aluminum
Operating temperature	10 ~ 40° C
Storage temperature	-10 ~ 80° C
Certificate	FCC, CE.

*Specification is subject to change without further notice.

4. Regulatory Compliance

FCC Conditions

This equipment has been tested and found to comply with Part 15 of the FCC Rules. Operation is subject to the following two conditions:

- (1) This device may not cause harmful interference
- (2) This device must accept any interference received including interference that may cause undesired operation.

CE

This equipment is in compliance with the requirements of the following regulations: EN 55 022: CLASS B

WEEE Information

For EU (European Union) member users:

According to the WEEE (Waste electrical and electronic equipment) Directive, do not dispose of this product as household waste or commercial waste.

Waste electrical and electronic equipment should be appropriately collected and recycled as required by practices established for your country. For information on recycling of this product, please contact your local authorities, your household waste disposal service or the shop where you purchased the product.

