

# Installation Guide

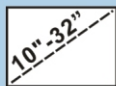


[www.newstar.eu](http://www.newstar.eu)

## LCD MONITOR/TV WALLMOUNT



Model:  
FPMA-W925



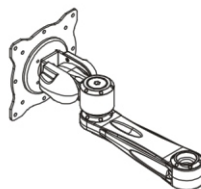
This product is designed to mount flat panel televisions weighing up to 20kgs (44lb) to a vertical wall. It allows you to effortlessly tilt your new television up or down without using tools.

**Safety Warning:** Be careful to make sure there are no missing or defective parts. Never use defective parts. Improper installation may cause damage or serious injury. Note The included hardware is for mounting on walls with wood stud construction. If you are uncertain about the nature of your wall, consult an expert. Please consult your hardware or installation professional for proper mounting to other types or walls. The supplied hardware is not for steel.

## What is included?

1/4"x2" #14x2"  
C. 4pcs/each

A. 1pc  
H. 2pcs



B. 1pc

3/8"x44"

D. 1pc

I. 1pc

E. 1pc

J. 1pc

F. 1pc

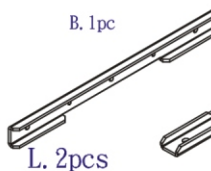
K. 1pc

3/8"  
G. 1pc

N. M4x5 4pcs

O. M4x8 4pcs

P. M4x12 6pcs



L. 2pcs



M. 2pcs

Q. M4x16 6pcs

M5x16 6pcs

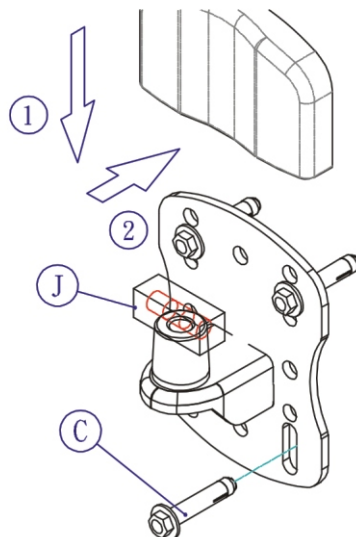
M6x16 6pcs

R. Washers

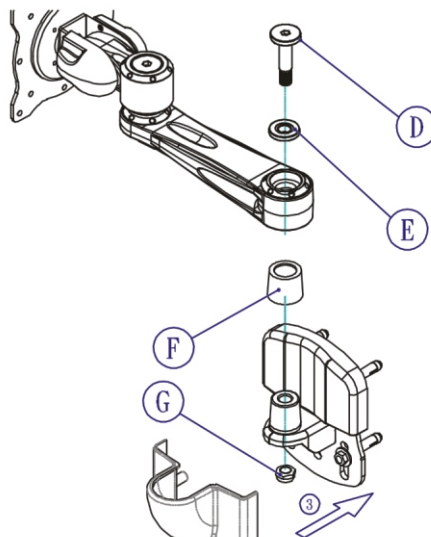
M5 6pcs

**CAUTION:** Do not exceed **20 kilo** weight limit  
**LET OP:** Maximaal draagvermogen **20 kilo**

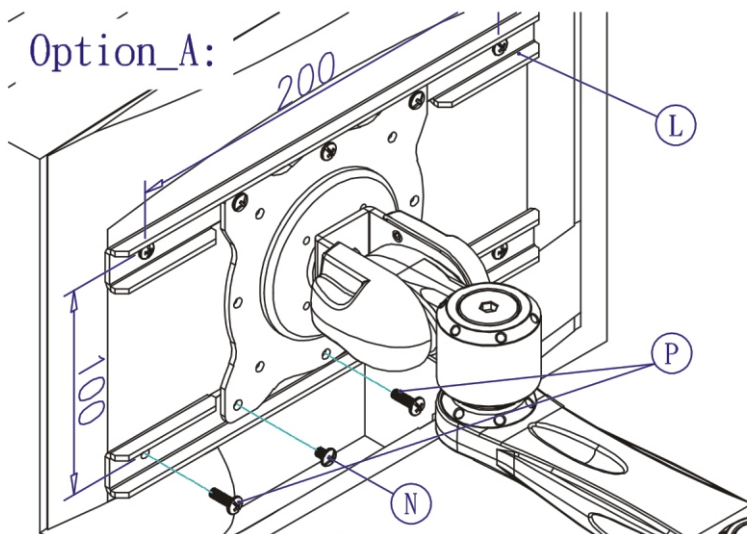
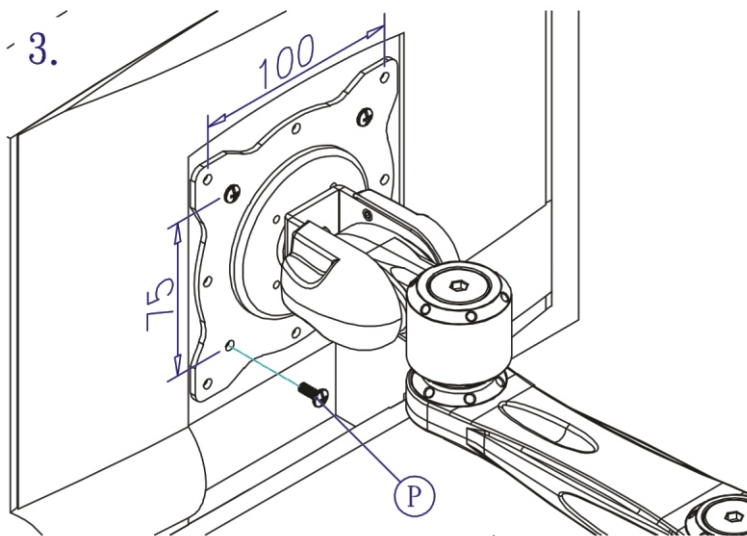
1.



2.

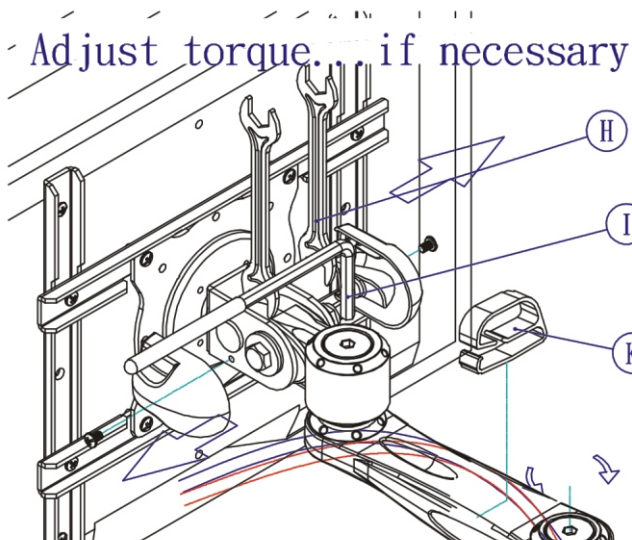
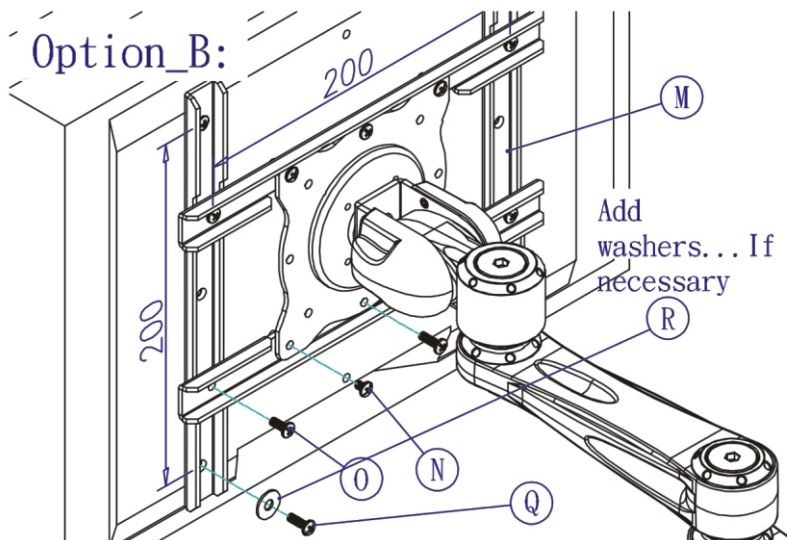


**CAUTION:** Do not exceed **20 kilo** weight limit  
**LET OP:** Maximaal draagvermogen **20 kilo**



**CAUTION:** Do not exceed **20 kilo** weight limit

**LET OP:** Maximaal draagvermogen **20 kilo**



**CAUTION:** Do not exceed **20 kilo** weight limit  
**LET OP:** Maximaal draagvermogen **20 kilo**

# Installation Guide

**NEWSTAR**  
computer products

[www.newstar.eu](http://www.newstar.eu)

## LCD MONITOR/TV WALLMOUNT



All Rights Reserved  
Unauthorized Copying and Reproduction are prohibited