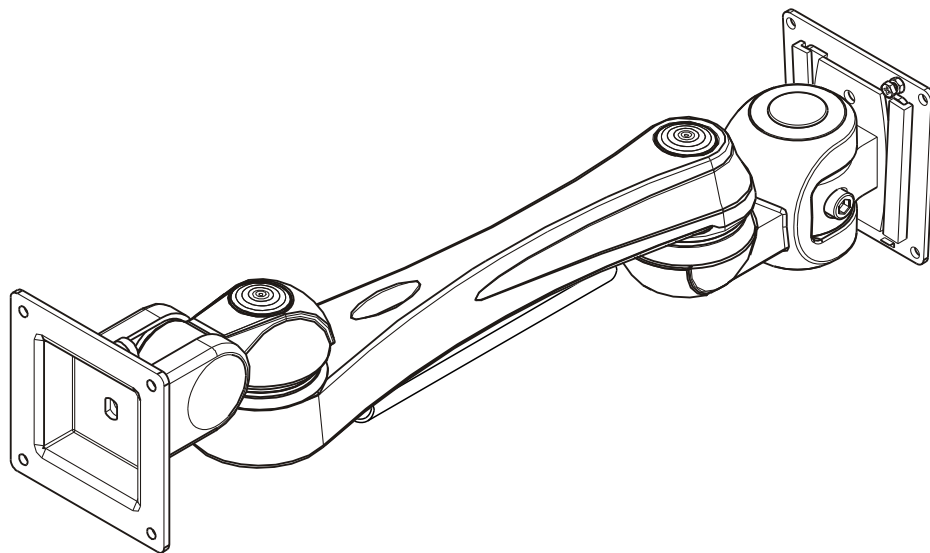


NewStar user's Manual

LCD Monitor Arm FPMA-W920



NEWSTAR
computerproducts

www.NewStar.nl

Phone: + 31 (0) 23 547 88 88

LCD Monitor Arm

Before assembly

Please spend some times to read this and follow the procedures step by step. Some panels are viewed differently from the exploded drawing below. This is for extra clarity.

Do not discard any of the packaging until you have checked all the parts and the package of fittings. If you are missing any of the parts, please contact the store from which you purchased your products. The staff will do their best to help you.

Check List



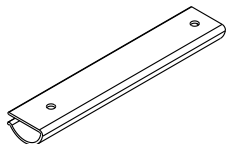
Small screw X9



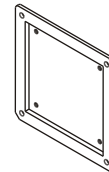
Nut X1



screw X2



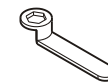
Long Cable
Cover x1



Connector plate X1



Wall mount plate X1

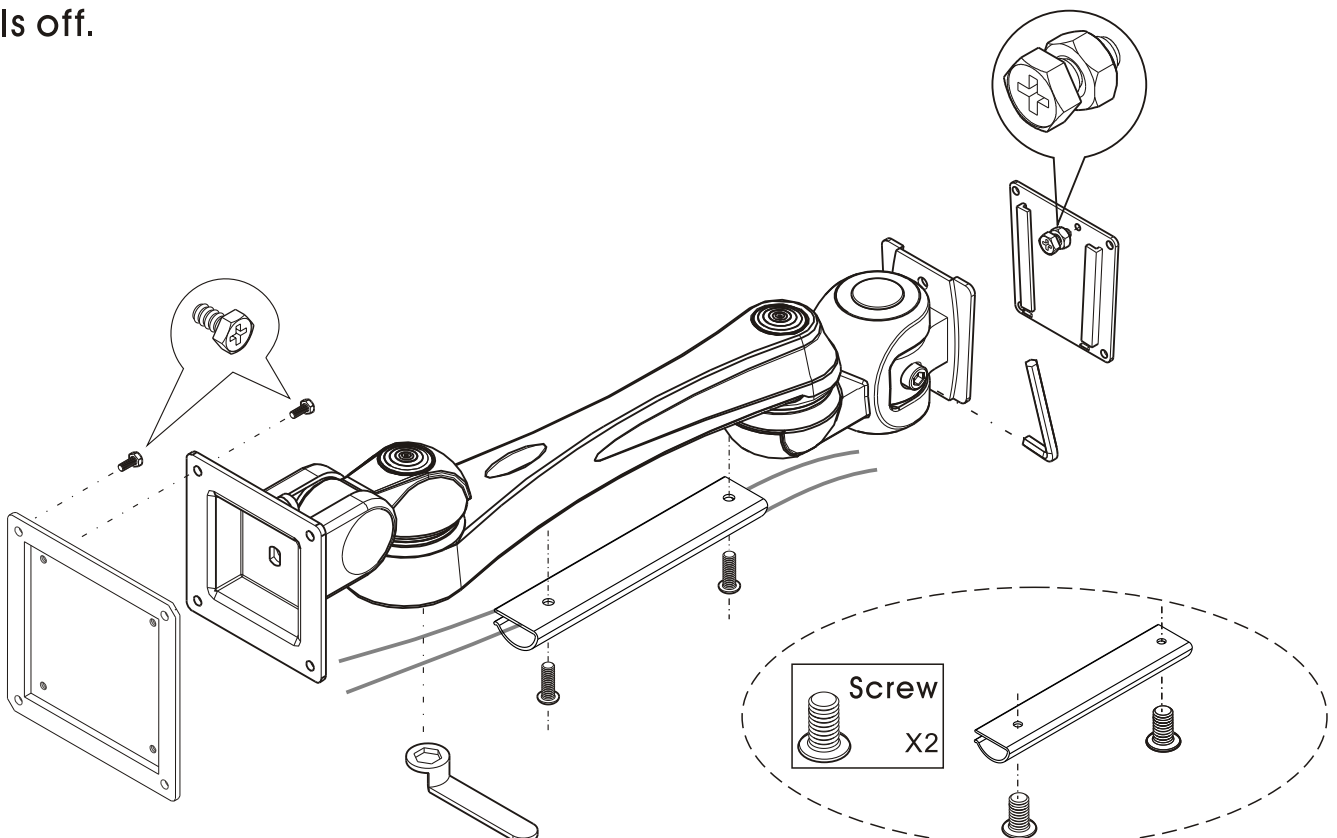


Wrench X1



Allen key 5mm x1

Fix the wall mount plate to the solid wall with 4 screws. After gripping the connection seat to the wall mount plate, tighten the screws about 2 ~ 3 circles and then secure it with wall mount plate for avoiding the arm falls off.



FPMA-W920

2006.11.21