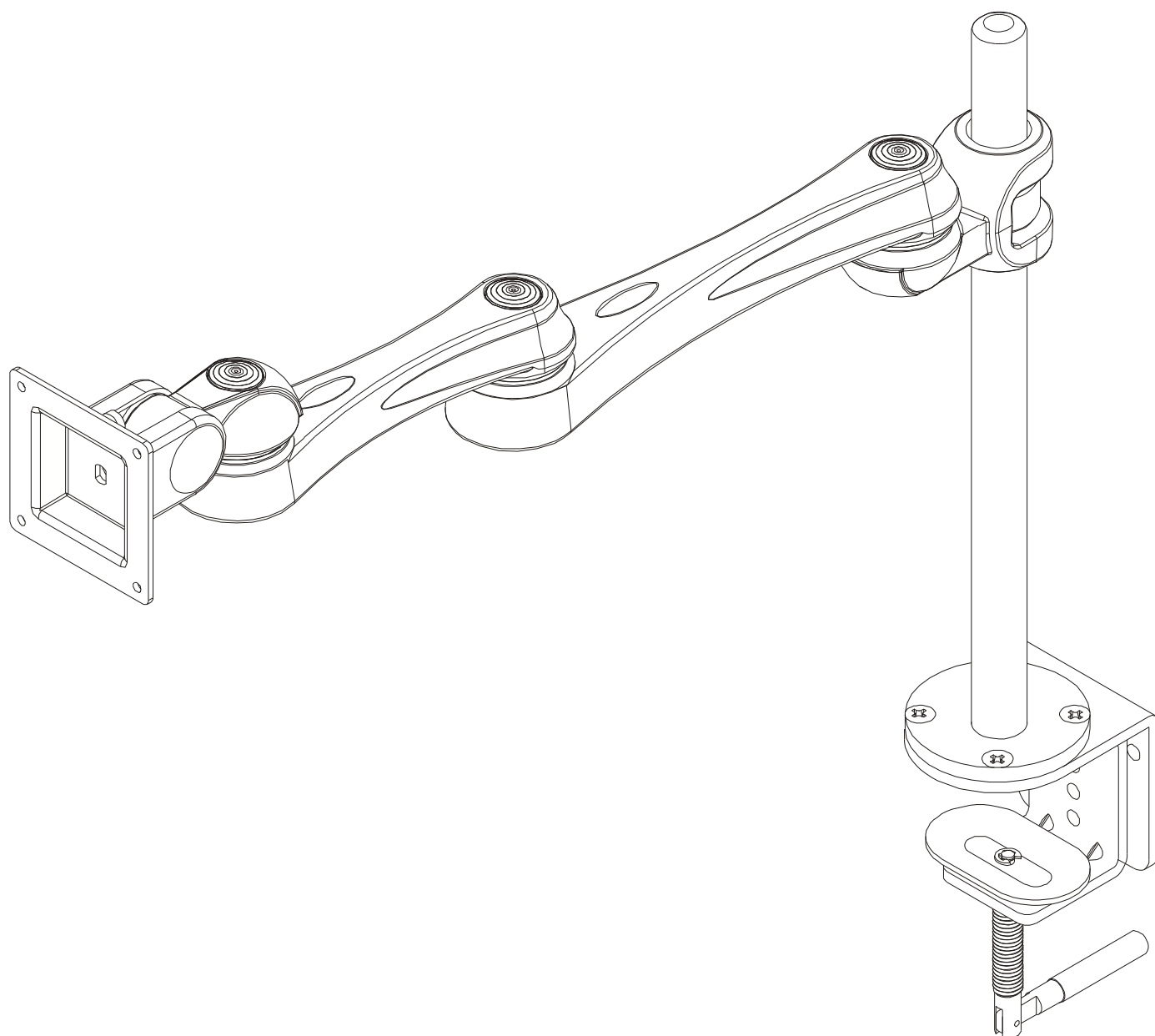


# FPMA-D930



# FPMA-D930

## Before assembly

Please spend some times to read this and follow the procedures step by step.

Some panels are viewed differently from the exploded drawing below. This is for extra clarity.

Do not discard any of the packaging until you have checked all the parts and the package of fittings. If you are missing any of the parts, please contact the store from which you purchased your products. The staff will do their best to help you.

## FPMA-D930 parts

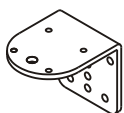
### Clamp check-list



Clamp pad X1



Blot X4



Bracket X1



Clamp X1



Allen key 6mm x1



Allen key 4mm x1



Allen key 5mm x1



Stopper X1

+

Stop screw X1



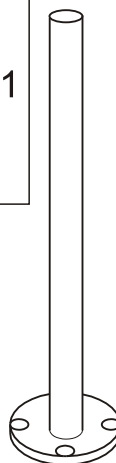
Screw X4



Plug X1

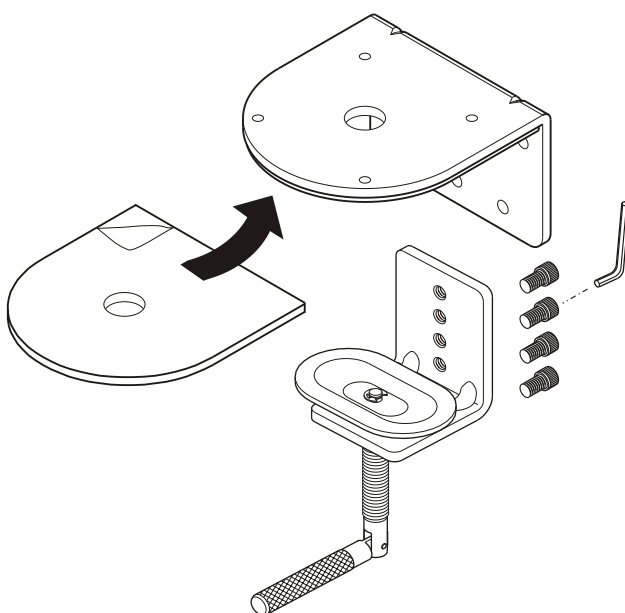


Cable tie X1



Pillar X1

## Standard clamp type



Use 6mm Allen key to secure the cranking unit to the bracket with at least two bolts. (For desk 15~100mm thick, over 30mm is suggested.) Use 4mm Allen key to secure the pillar & clamp with 4 screws.

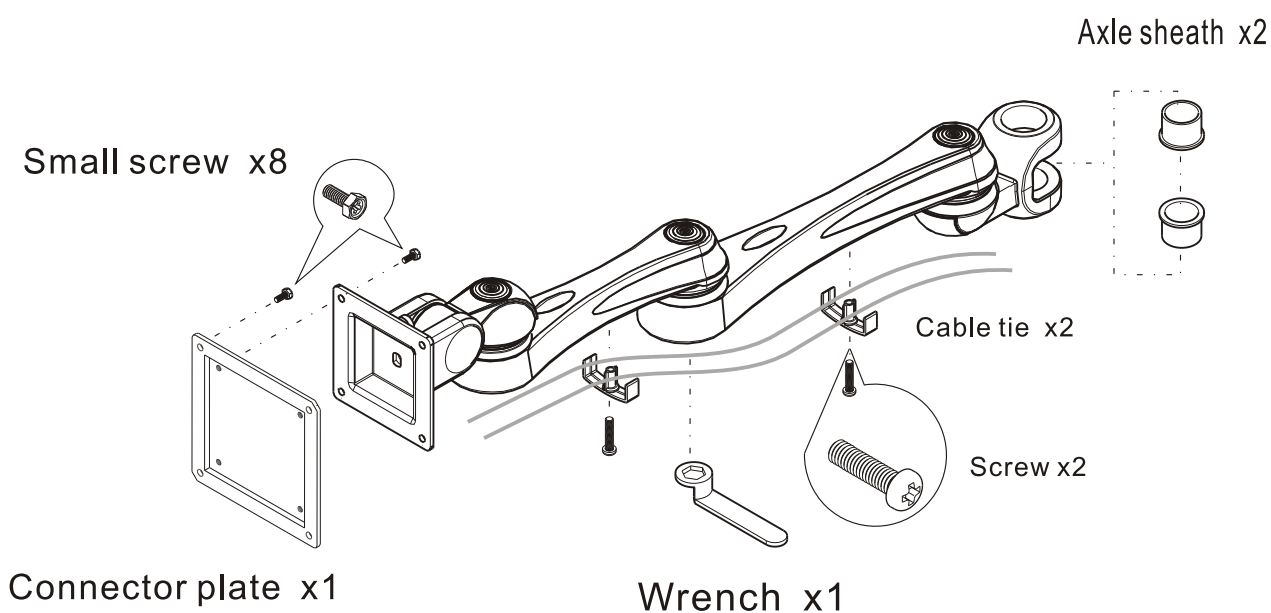
# FPMA-D930

## Before assembly

Please spend some times to read this and follow the procedures step by step.

Some panels are viewed differently from the exploded drawing below. This is for extra clarity.

Do not discard any of the packaging until you have checked all the parts and the package of fittings. If you are missing any of the parts, please contact the store from which you purchased your products. The staff will do their best to help you.

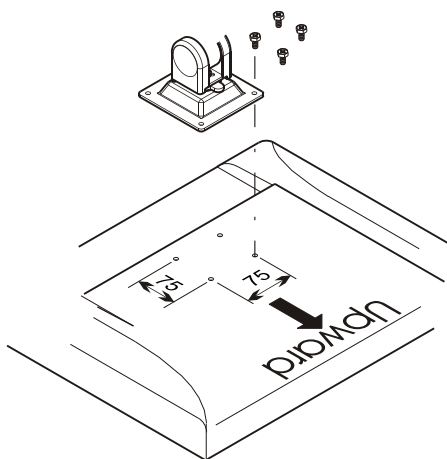


## Check the VESA interface before assembly.

### 75mmx75mm VESA interface.

Place LCD on the proper position on desk.

Secure the VESA to the LCD with four screws.

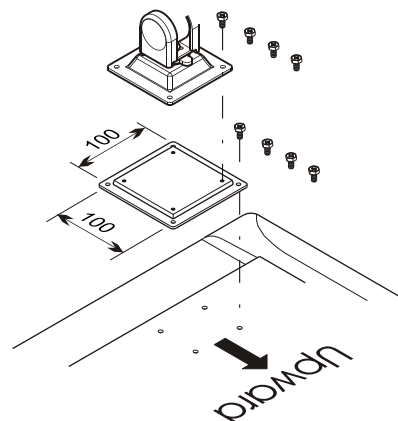


### 100mmx100mm VESA interface.

Place LCD on the proper position on desk.

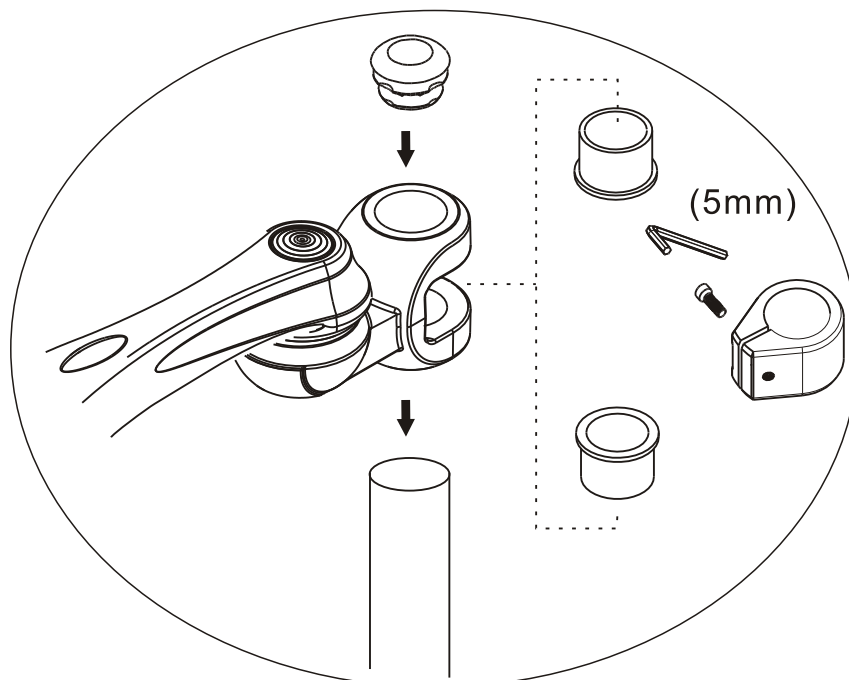
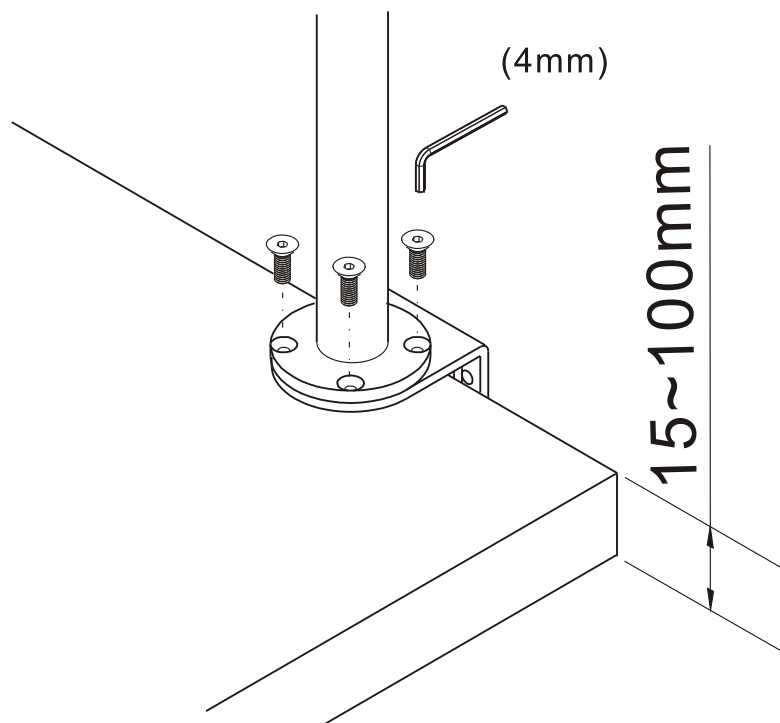
Secure 75x75mm VESA four to 100x100mm VESA with screws.

Secure the 100x100mm VESA to the LCD with four screws.



## Assembly guide

Fix the clamp on the desk, then secure the pillar with 4 screws.



Put axle sheaths into upper and beneath holes of the connection block. Then put the stopper in together with pillar. Adjust the level of high to the most comfortable view. Secure it with screw and then put in the plug.