


Specifications cable (A)	
Type	Patchcord - Duplex
Outer diameter	1.8mm
Tensile strength	90N (short time 150N)
Operation temp.	-20°C to +70°C
Outer Jacket	LSZH
Cable colour	Erika Violet
Cable printing	ACT Premium Multimode Fiber Optical Patch Cable 50/125 OM4 LSZH
Specifications Connector (B,C)	
Connector	SC Duplex
Polishing Connector	UPC
Ferrule Connector	Ceramic Zirconia (ZrO2)
Ferrule Diamater	2.50mm
Housing	Black (PBT)
Boot	Red/Black (TPE)
Cap	Clear (PE)



ACT Multimode Fiber Optical duplex patch cable 50/125 OM4

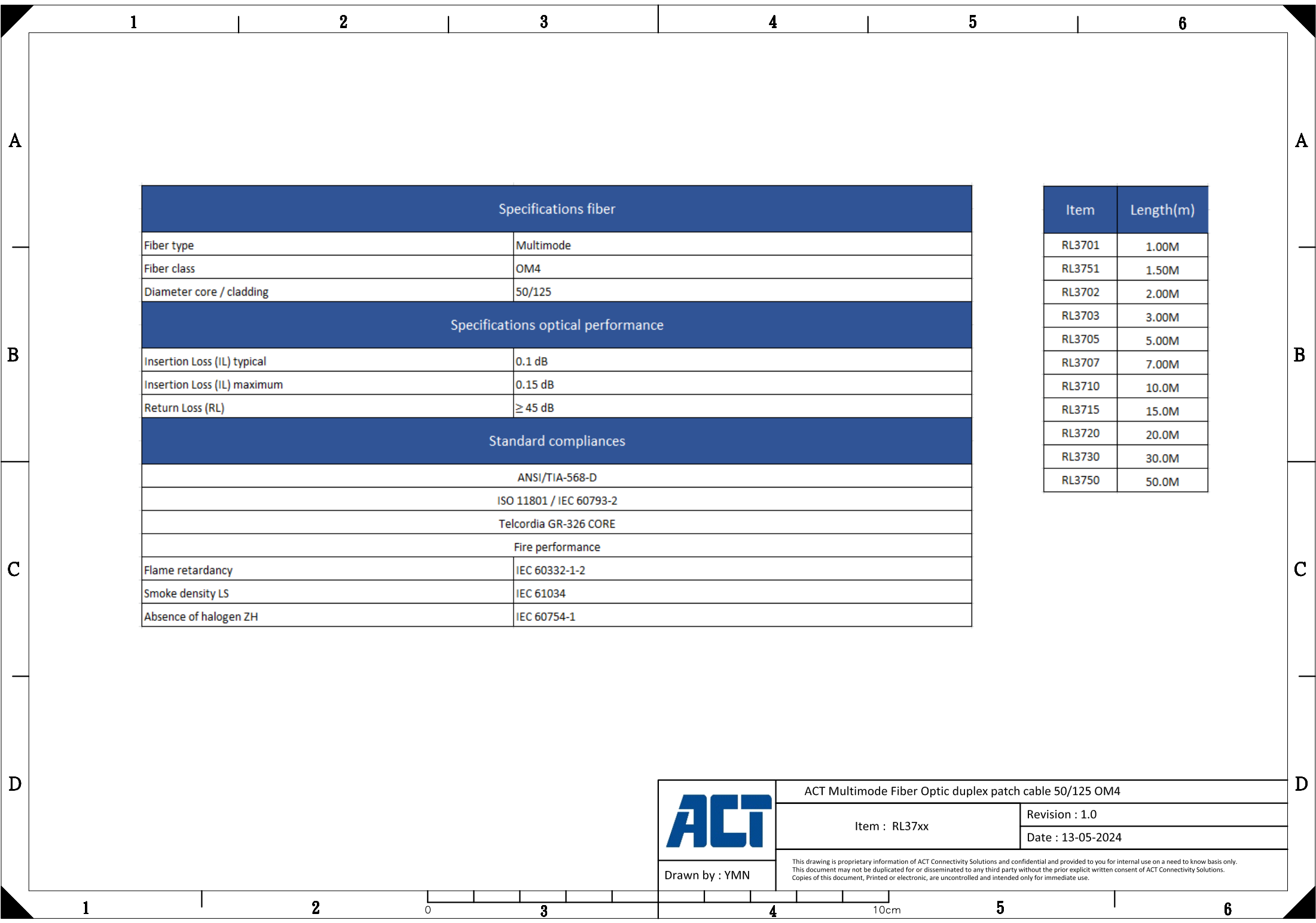
Item : RL37xx

Revision : 1.0

Date : 13-05-2024


Drawn by : YMN

This drawing is proprietary information of ACT Connectivity Solutions and confidential and provided to you for internal use on a need to know basis only. This document may not be duplicated for or disseminated to any third party without the prior explicit written consent of ACT Connectivity Solutions. Copies of this document, Printed or electronic, are uncontrolled and intended only for immediate use.



Specifications fiber	
Fiber type	Multimode
Fiber class	OM4
Diameter core / cladding	50/125
Specifications optical performance	
Insertion Loss (IL) typical	0.1 dB
Insertion Loss (IL) maximum	0.15 dB
Return Loss (RL)	≥ 45 dB
Standard compliances	
ANSI/TIA-568-D	
ISO 11801 / IEC 60793-2	
Telcordia GR-326 CORE	
Fire performance	
Flame retardancy	IEC 60332-1-2
Smoke density LS	IEC 61034
Absence of halogen ZH	IEC 60754-1

Item	Length(m)
RL3701	1.00M
RL3751	1.50M
RL3702	2.00M
RL3703	3.00M
RL3705	5.00M
RL3707	7.00M
RL3710	10.0M
RL3715	15.0M
RL3720	20.0M
RL3730	30.0M
RL3750	50.0M



ACT Multimode Fiber Optic duplex patch cable 50/125 OM4

Item : RL37xx

Revision : 1.0

Date : 13-05-2024

Drawn by : YMN

This drawing is proprietary information of ACT Connectivity Solutions and confidential and provided to you for internal use on a need to know basis only.

This document may not be duplicated for or disseminated to any third party without the prior explicit written consent of ACT Connectivity Solutions.

Copies of this document, Printed or electronic, are uncontrolled and intended only for immediate use.