

Specifications cable (A)	
Type	Patchcord - Duplex
Outer diameter	1.8mm
Tensile strength	90N (short time 150N)
Operation temp.	-20°C to +70°C
Outer Jacket	LSZH
Cable colour	Yellow
Cable printing	ACT Premium Single Mode Fiber Optical Patch Cable 9/125 OS2 LSZH
Specifications Connector (B)	
Connector	LC Duplex
Polishing Connector	UPC
Ferrule Connector	Ceramic Zirconia (ZrO2)
Ferrule Diamater	1.25mm
Housing	Blue (PC)
Clip	Blue (PP)
Boot	White/Blue (TPE)
Cap	White (PE)
Specifications Connector (C)	
Connector	LC Duplex
Polishing Connector	APC
Ferrule Connector	Ceramic Zirconia (ZrO2)
Ferrule Diamater	1.25mm
Housing	Green (PC)
Clip	Green (PP)
Boot	White/Green (TPE)
Cap	White (PE)

ACT Single Mode Fiber Optic duplex patch cable 9/125 OS2

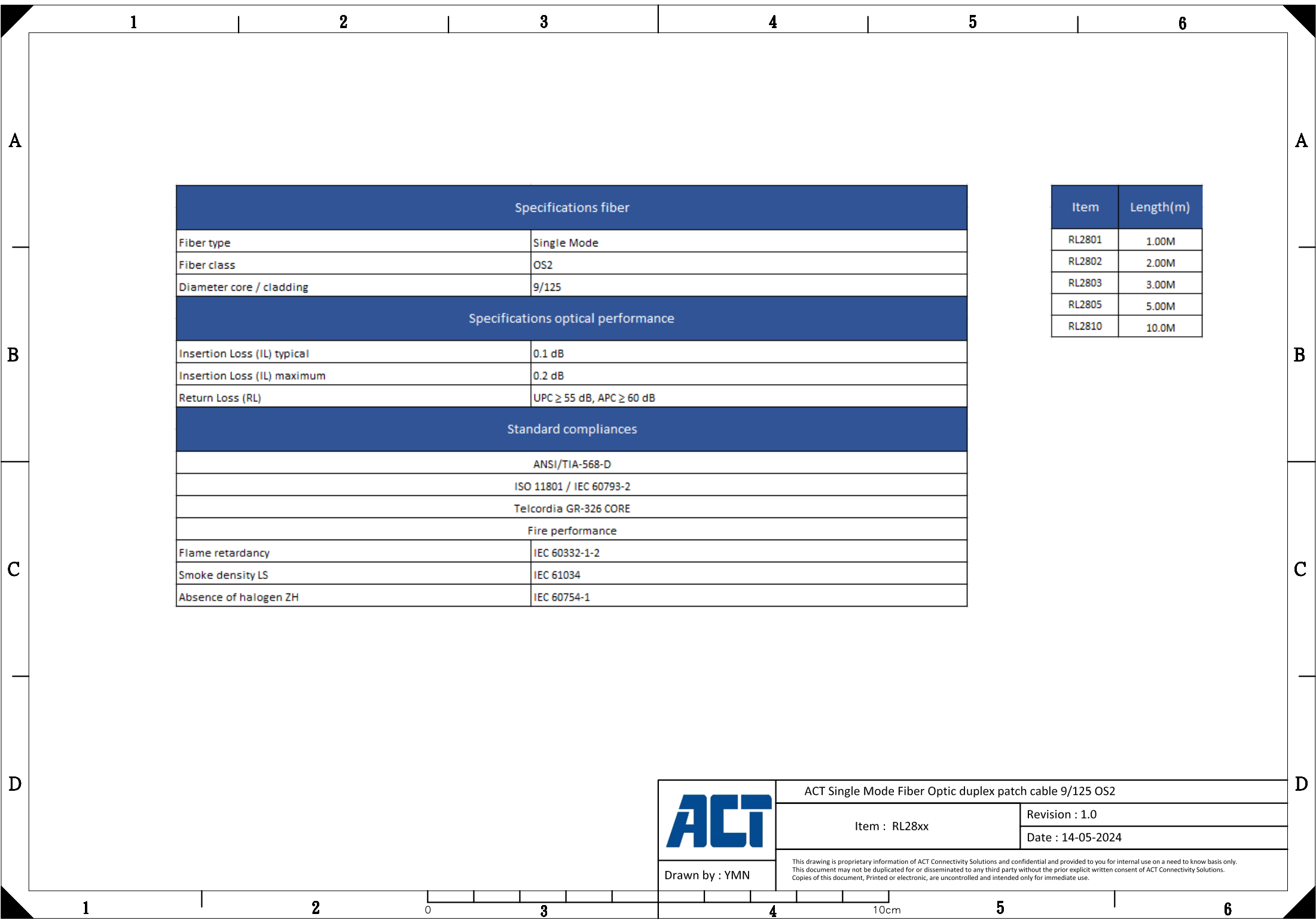
Item : RL28xx

Revision : 1.0

Date : 14-05-2024


Drawn by : YMN

This drawing is proprietary information of ACT Connectivity Solutions and confidential and provided to you for internal use on a need to know basis only. This document may not be duplicated for or disseminated to any third party without the prior explicit written consent of ACT Connectivity Solutions. Copies of this document, Printed or electronic, are uncontrolled and intended only for immediate use.



Specifications fiber	
Fiber type	Single Mode
Fiber class	OS2
Diameter core / cladding	9/125
Specifications optical performance	
Insertion Loss (IL) typical	0.1 dB
Insertion Loss (IL) maximum	0.2 dB
Return Loss (RL)	UPC ≥ 55 dB, APC ≥ 60 dB
Standard compliances	
ANSI/TIA-568-D	
ISO 11801 / IEC 60793-2	
Telcordia GR-326 CORE	
Fire performance	
Flame retardancy	IEC 60332-1-2
Smoke density LS	IEC 61034
Absence of halogen ZH	IEC 60754-1

Item	Length(m)
RL2801	1.00M
RL2802	2.00M
RL2803	3.00M
RL2805	5.00M
RL2810	10.0M

	ACT Single Mode Fiber Optic duplex patch cable 9/125 OS2	
	Item : RL28xx	Revision : 1.0
	Date : 14-05-2024	
Drawn by : YMN	<small>This drawing is proprietary information of ACT Connectivity Solutions and confidential and provided to you for internal use on a need to know basis only. This document may not be duplicated for or disseminated to any third party without the prior explicit written consent of ACT Connectivity Solutions. Copies of this document, Printed or electronic, are uncontrolled and intended only for immediate use.</small>	