

ACT Single Mode Fiber Optic CS to Polarity Twist LC 9/125 OS2

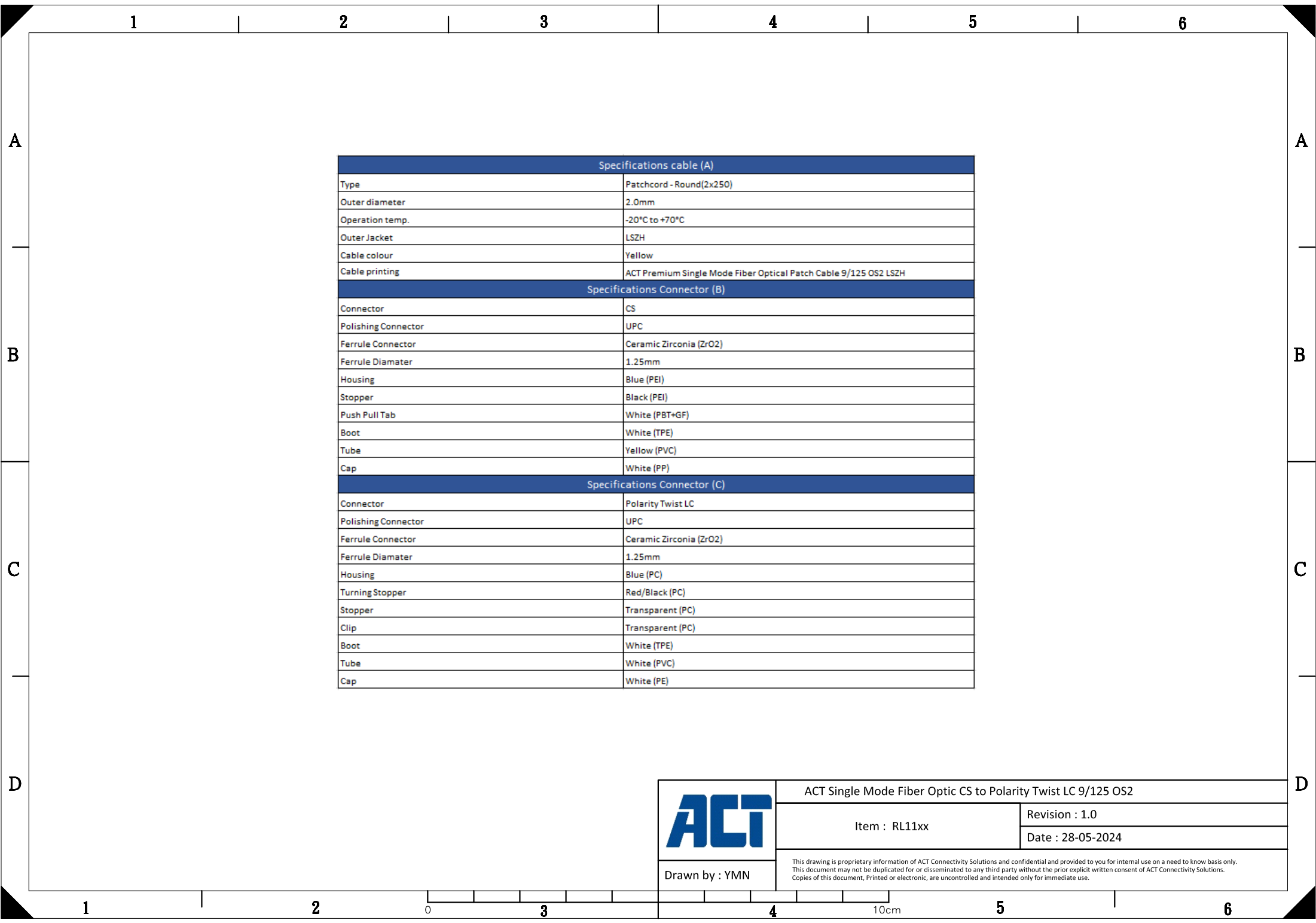
Item : RL11xx

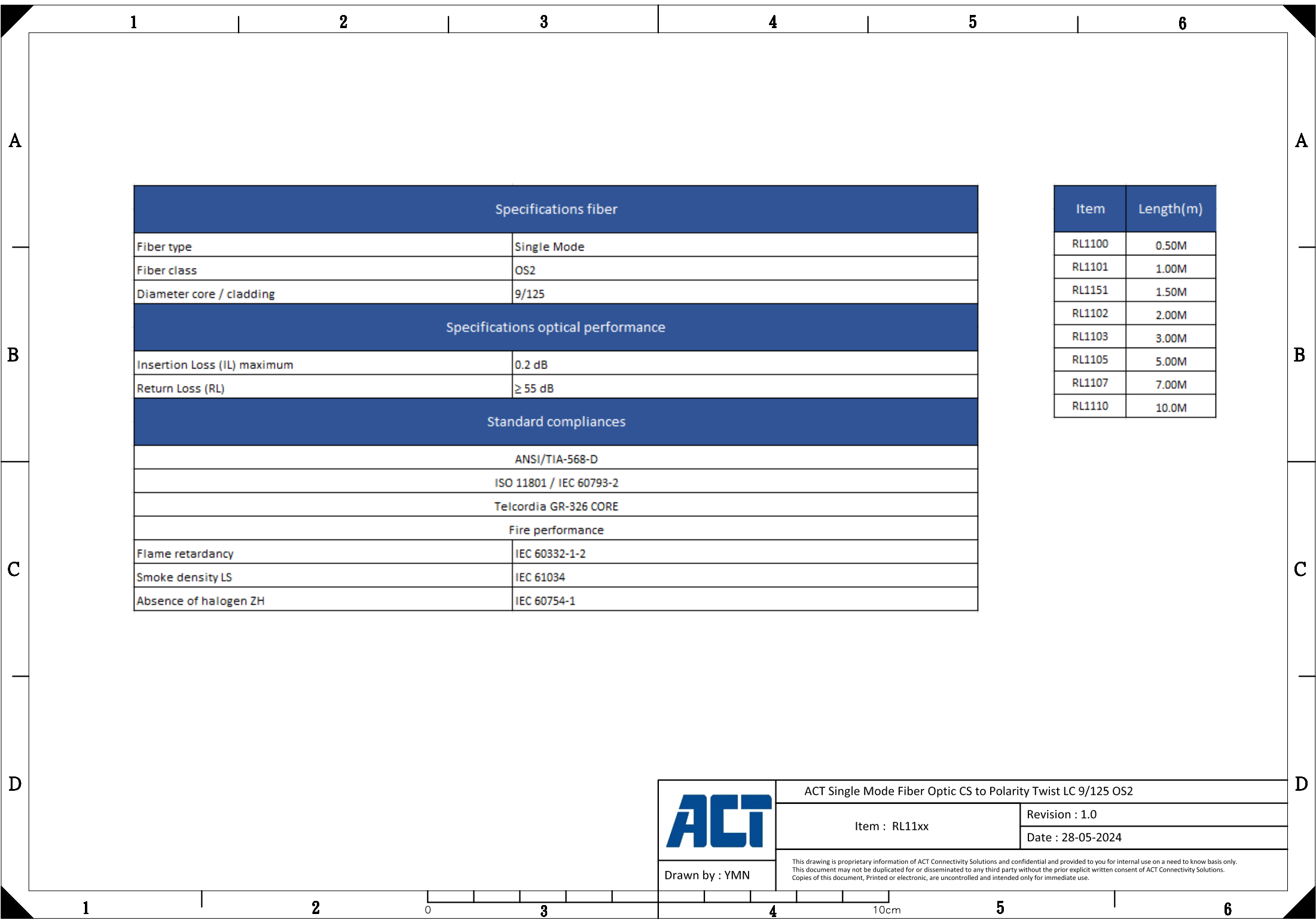
Revision : 1.0

Date : 28-05-2024

Drawn by : YMN

This drawing is proprietary information of ACT Connectivity Solutions and confidential and provided to you for internal use on a need to know basis only. This document may not be duplicated for or disseminated to any third party without the prior explicit written consent of ACT Connectivity Solutions. Copies of this document, Printed or electronic, are uncontrolled and intended only for immediate use.





A

B

C

D

A


B

C

D

Specifications fiber	
Fiber type	Single Mode
Fiber class	OS2
Diameter core / cladding	9/125
Specifications optical performance	
Insertion Loss (IL) maximum	0.2 dB
Return Loss (RL)	≥ 55 dB
Standard compliances	
ANSI/TIA-568-D	
ISO 11801 / IEC 60793-2	
Telcordia GR-326 CORE	
Fire performance	
Flame retardancy	IEC 60332-1-2
Smoke density LS	IEC 61034
Absence of halogen ZH	IEC 60754-1

Item	Length(m)
RL1100	0.50M
RL1101	1.00M
RL1151	1.50M
RL1102	2.00M
RL1103	3.00M
RL1105	5.00M
RL1107	7.00M
RL1110	10.0M

	ACT Single Mode Fiber Optic CS to Polarity Twist LC 9/125 OS2	
	Item : RL11xx	Revision : 1.0
	Date : 28-05-2024	
Drawn by : YMN	<small>This drawing is proprietary information of ACT Connectivity Solutions and confidential and provided to you for internal use on a need to know basis only. This document may not be duplicated for or disseminated to any third party without the prior explicit written consent of ACT Connectivity Solutions. Copies of this document, Printed or electronic, are uncontrolled and intended only for immediate use.</small>	