

ConvertIP SRS  
Single-channel RJ45 SDI-to-IP transmitter/receiver

Matrox ConvertIP SRS is a compact, standalone ST 2110 and IPMX transmitter/receiver device. Delivering up to 4K60 image quality and featuring one RJ45 port, ConvertIP SRS is designed for both 1G and 2.5G AV workflows and is optimal for an ultra-low latency experience.

Key Features

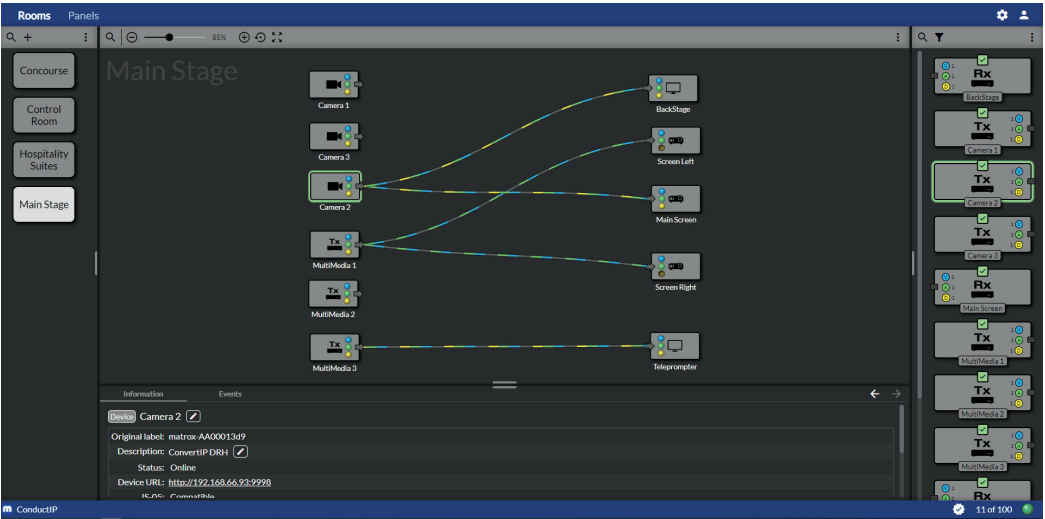
- 12G-SDI I/O
- 1x RJ45 (1G & 2.5G network support)
- Power redundancy through PoE+



1. Compressed Media & Control Data I/O with PoE+
2. SDI In/Out
3. Locking Power Connector

ConductIP  
Media Routing Appliance & Software

With Matrox® ConductIP, you can discover, monitor, and route any AMWA NMOS-enabled IPMX-ready or SMPTE ST 2110 device or signal. ConductIP gives you a comprehensive view of all content on your IP network and where it is being routed while allowing you to intuitively organize devices in your unique setup.



Matrox® ConvertIP Series  
Designed to easily monitor your ST 2110 sources

Welcome to the ConvertIP family of ST 2110 converters that are designed to help monitor your ST 2110-22 and ST 2110-20 sources. ConvertIP devices simplify the switch to an ST 2110 environment by allowing you to leverage existing infrastructures and migrate to 4K and IP to maximize your return on investment. Devices in this series come with multiple input/output connectivity options whether monitoring using HDMI or SDI—ConvertIP has you covered! All devices in this family are IPMX ready, support multiple networks, can be configured as a transmitter OR receiver, and support up to 25 Gbps connectivity allowing for the delivery of uncompressed 4K video over ST 2110. They are compact standalone devices with a fanless design for quiet cooling and they all mount easily to the back of a monitor. How do you know which device is best for you? Come and meet the family!

**Contact Matrox Video**  
**Montreal Headquarters:** 1-800-361-4903 (North America), 514-822-6364 (Worldwide) | [video@matrox.com](mailto:video@matrox.com)  
**London Office:** +44 (1895) 827300  
**Munich Office:** +49 89 62170-444

Matrox and Matrox Video product names are registered trademarks and/or trademarks of Matrox Graphics Inc. in Canada and/or other countries. All other company and product names are registered trademarks and/or trademarks of their respective owners. 08/2023



[video.matrox.com](http://video.matrox.com)



## ConvertIP SRH

Single-channel RJ45 HDMI-to-IP transmitter/receiver

Matrox ConvertIP SRH is a compact, standalone ST 2110 and IPMX-ready transmitter/receiver. Featuring HDMI I/O and one RJ45 port, ConvertIP SRH is designed for compressed 1G workflows.

### Key Features

- HDMI I/O
- 1x RJ45 (1G network support)
- Power redundancy through PoE+



1. Compressed Media & Control Data I/O with PoE+
2. HDMI In
3. HDMI Out
4. Locking Power Connector

## ConvertIP DRH

Dual-channel RJ45 HDMI-to-IP transmitter/receiver

Matrox ConvertIP DRH is a compact, standalone ST 2110 and IPMX-ready transmitter/receiver. Featuring HDMI I/O and three RJ45 ports on a single device. ConvertIP DRH is designed for compressed 1G workflows.

### Key Features

- HDMI I/O
- 3x RJ45 (1G network support)
- Fanless design for quiet cooling
- Power redundancy through PoE+



1. Analog Audio Line Out
2. Analog Audio Line In
3. Compressed Media with PoE+
4. Redundant Compressed Media
5. HDMI In
6. HDMI Out
7. Dedicated Control Data I/O
8. Locking Power Connector

## ConvertIP DSH

Dual-channel SFP HDMI-to-IP transmitter/receiver

Matrox ConvertIP DSH is a compact, standalone ST 2110 and IPMX-ready transmitter/receiver. Featuring HDMI I/O, one RJ45, and two SFP28 ports on a single device, ConvertIP DSH is designed for compressed or uncompressed workflows up to 25G.

### Key Features

- HDMI I/O
- 2x SFP28 (10G & 25G network support)
- 1x RJ45 (1G network support)
- Power redundancy through PoE+



1. Analog Audio Line Out
2. Analog Audio Line In
3. Compressed & Uncompressed Media
4. Redundant Compressed & Uncompressed Media
5. HDMI In
6. HDMI Out
7. Dedicated Control Data I/O with PoE+
8. Locking Power Connector

## ConvertIP DRS

Dual-channel RJ45 SDI-to-IP transmitter/receiver

Matrox ConvertIP DRS is a compact, standalone ST 2110 and IPMX-ready transmitter/receiver. Featuring 12G-SDI, genlock, and three RJ45 ports on a single device, ConvertIP DRS is designed for compressed 1G workflows.

### Key Features

- SDI I/O
- 3x RJ45 (1G network support)
- Genlock support for house sync input
- Power redundancy through PoE+



1. Analog Audio Line Out
2. Analog Audio Line In
3. Compressed Media with PoE+
4. Redundant Compressed Media
5. SDI In/Out
6. Genlock
7. Dedicated Control Data I/O
8. Locking Power Connector

## ConvertIP DSS

Dual-channel RJ45 SDI-to-IP transmitter/receiver

Matrox ConvertIP DSS is a compact, standalone ST 2110 and IPMX-ready transmitter/receiver. Featuring 12G-SDI, genlock, one RJ45, and two SFP28 ports on a single device, ConvertIP DSS is designed for compressed or uncompressed workflows up to 25G.

### Key Features

- SDI I/O
- 2x SFP28 (10G & 25G network support)
- 1x RJ45 (1G network support)
- Power redundancy through PoE+



1. Analog Audio Line Out
2. Analog Audio Line In
3. Compressed & Uncompressed Media
4. Redundant Compressed & Uncompressed Media
5. SDI In/Out
6. Genlock
7. Dedicated Control Data I/O with PoE+
8. Locking Power Connector

## ConvertIP SRST

Dual-channel RJ45 SDI-to-IP transmitter/receiver

For businesses and organizations outfitted with HDBaseT™ installations, moving to new infrastructure can be complicated and costly. The Matrox ConvertIP SRST transmitter/receiver enables you to scale existing HDBaseT network infrastructure—by integrating HDBaseT content into and from the IP network—without the additional cost of upgrading your current equipment or infrastructure. Based on open standards, ConvertIP SRST is also compatible with a SMPTE ST 2110 network.

### Key Features

- HDBaseT I/O
- 1x SFP28 (10G & 25G network support)
- 1x RJ45 (1G & 2.5G network support)
- 1/10/25 GbE interface
- Leverage existing HDBaseT installations
- Power redundancy through PoE+



1. HDBaseT I/O v3.0
2. Compressed & Uncompressed Media
3. Compressed Media & Control Data I/O with PoE+
4. Locking Power Connector