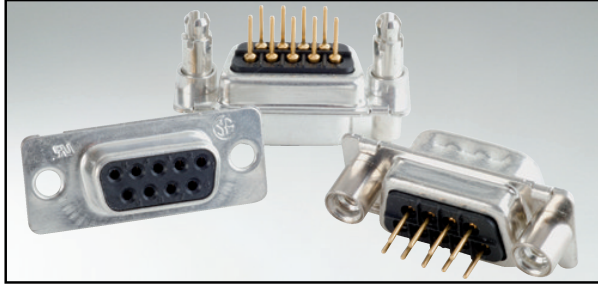


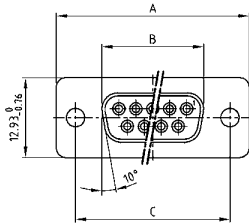
D-SUB STANDARD

Solder pin – Straight – Precision machined contacts



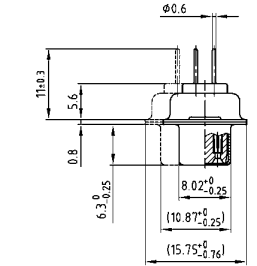
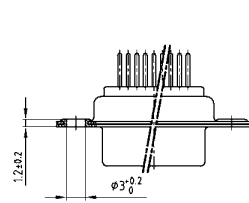
RoHS compliant – CSA listed, File No.: LR 115000-1 – UL listed, File No.: E202784

SOCKET CONNECTOR



No. of pos.	A -0.76	B -0.25	C
09	31.19	16.46	25.00 +0.12
15	39.52	24.79	33.30 +0.15 -0.10
25	53.42	38.50	47.04 +0.13
37	69.70	54.96	63.50 +0.13
50	67.31	52.55	61.10 +0.14 -0.11

PCB layout: Kat1 kFUA

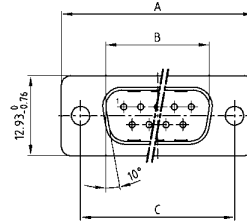


50 pos. = Dim. in (_)

DESCRIPTION

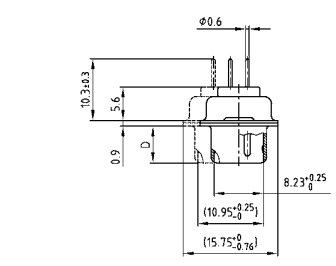
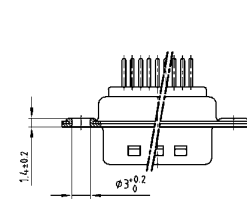
- Mounting styles:
 - with through-hole, Ø .118" / 3 mm
 - with 4-40 UNC or M3 threaded insert
 - with 4-40 UNC or M3 threaded rear spacer
 - with 4-40 UNC or M3 front and threaded rear spacer
 - with 4-40 UNC front/M3 threaded rear spacer
 - with M3 front/4-40 UNC or M3 threaded rear spacer with PCB clip
 - with 4-40 UNC or M3 Front/Threaded rear spacer with PCB clip
- Quality class 3 (also available in quality class 1)
- Shell: Steel tin plated (brass tin plated or stainless steel available on request)

PLUG CONNECTOR



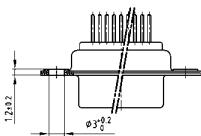
No. of pos.	A -0.76	B -0.25	C	D -0.3
09	31.19	16.79	25.00 +0.12	6.12
15	39.52	25.12	33.30 +0.15 -0.10	6.12
25	53.42	38.84	47.04 +0.13	5.99
37	69.70	55.30	63.50 +0.13	5.99
50	67.31	52.68	61.10 +0.14 -0.11	5.99

PCB layout: Kat1 kFUA



50 pos. = Dim. in (_)

ORDER DATA

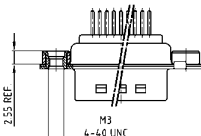


SOCKET CONNECTOR

No. of pos.	Mounting style	Part Number
09	Through-hole	164 A 10069 X
15	Through-hole	164 A 10079 X
25	Through-hole	164 A 10089 X
37	Through-hole	164 A 10099 X
50	Through-hole	164 A 10109 X

PLUG CONNECTOR

No. of pos.	Mounting style	Part Number
09	Through-hole	163 A 11119 X
15	Through-hole	163 A 11129 X
25	Through-hole	163 A 11139 X
37	Through-hole	163 A 11149 X
50	Through-hole	163 A 11159 X



SOCKET CONNECTOR

No. of pos.	Mounting style	Part Number
09	4-40 UNC Threaded insert	164 A 10319 X
15	4-40 UNC Threaded insert	164 A 10329 X
25	4-40 UNC Threaded insert	164 A 10339 X
37	4-40 UNC Threaded insert	164 A 10349 X
50	4-40 UNC Threaded insert	164 A 10359 X
09	M3 Threaded insert	164 A 10369 X
15	M3 Threaded insert	164 A 10379 X
25	M3 Threaded insert	164 A 10389 X
37	M3 Threaded insert	164 A 10399 X
50	M3 Threaded insert	164 A 10409 X

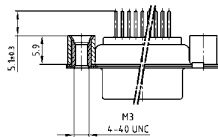
PLUG CONNECTOR

No. of pos.	Mounting style	Part Number
09	4-40 UNC Threaded insert	163 A 11369 X
15	4-40 UNC Threaded insert	163 A 11379 X
25	4-40 UNC Threaded insert	163 A 11389 X
37	4-40 UNC Threaded insert	163 A 11399 X
50	4-40 UNC Threaded insert	163 A 11409 X
09	M3 Threaded insert	163 A 11419 X
15	M3 Threaded insert	163 A 11429 X
25	M3 Threaded insert	163 A 11439 X
37	M3 Threaded insert	163 A 11449 X
50	M3 Threaded insert	163 A 11459 X

D-SUB STANDARD – MOUNTING STYLES

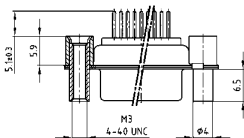
Solder pin – Straight – Precision machined contacts

ORDER DATA



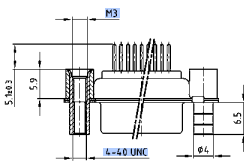
SOCKET CONNECTOR		
No. of pos.	Mounting style	Part Number
09	4-40 UNC Threaded rear spacer	164 A 12029 X
15	4-40 UNC Threaded rear spacer	164 A 12039 X
25	4-40 UNC Threaded rear spacer	164 A 12049 X
37	4-40 UNC Threaded rear spacer	164 A 12059 X
50	4-40 UNC Threaded rear spacer	164 A 12069 X
09	M3 Threaded rear spacer	164 A 12079 X
15	M3 Threaded rear spacer	164 A 12089 X
25	M3 Threaded rear spacer	164 A 12099 X
37	M3 Threaded rear spacer	164 A 12109 X
50	M3 Threaded rear spacer	164 A 12119 X

PLUG CONNECTOR		
No. of pos.	Mounting style	Part Number
09	4-40 UNC Threaded rear spacer	163 A 13629 X
15	4-40 UNC Threaded rear spacer	163 A 13639 X
25	4-40 UNC Threaded rear spacer	163 A 13649 X
37	4-40 UNC Threaded rear spacer	163 A 13659 X
50	4-40 UNC Threaded rear spacer	163 A 13669 X
09	M3 Threaded rear spacer	163 A 13679 X
15	M3 Threaded rear spacer	163 A 13689 X
25	M3 Threaded rear spacer	163 A 13699 X
37	M3 Threaded rear spacer	163 A 13709 X
50	M3 Threaded rear spacer	163 A 13719 X



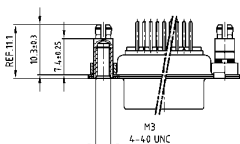
SOCKET CONNECTOR		
No. of pos.	Mounting style	Part Number
09	4-40 UNC Front/Threaded rear spacer	164 A 12129 X
15	4-40 UNC Front/Threaded rear spacer	164 A 12139 X
25	4-40 UNC Front/Threaded rear spacer	164 A 12149 X
37	4-40 UNC Front/Threaded rear spacer	164 A 12159 X
50	4-40 UNC Front/Threaded rear spacer	164 A 12169 X
09	M3 Front/Threaded rear spacer	164 A 12179 X
15	M3 Front/Threaded rear spacer	164 A 12189 X
25	M3 Front/Threaded rear spacer	164 A 12199 X
37	M3 Front/Threaded rear spacer	164 A 12209 X
50	M3 Front/Threaded rear spacer	164 A 12219 X

PLUG CONNECTOR		
No. of pos.	Mounting style	Part Number
09	4-40 UNC Front/Threaded rear spacer	163 A 13729 X
15	4-40 UNC Front/Threaded rear spacer	163 A 13739 X
25	4-40 UNC Front/Threaded rear spacer	163 A 13749 X
37	4-40 UNC Front/Threaded rear spacer	163 A 13759 X
50	4-40 UNC Front/Threaded rear spacer	163 A 13769 X
09	M3 Front/Threaded rear spacer	163 A 13779 X
15	M3 Front/Threaded rear spacer	163 A 13789 X
25	M3 Front/Threaded rear spacer	163 A 13799 X
37	M3 Front/Threaded rear spacer	163 A 13809 X
50	M3 Front/Threaded rear spacer	163 A 13819 X



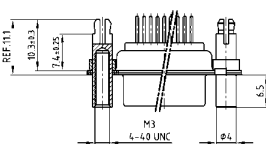
SOCKET CONNECTOR		
No. of pos.	Mounting style	Part Number
09	4-40 UNC Front /M3 Threaded rear spacer	164 A 12919 X
15	4-40 UNC Front /M3 Threaded rear spacer	164 A 12929 X
25	4-40 UNC Front /M3 Threaded rear spacer	164 A 12939 X
37	4-40 UNC Front /M3 Threaded rear spacer	164 A 12949 X
50	4-40 UNC Front /M3 Threaded rear spacer	164 A 12959 X

PLUG CONNECTOR		
No. of pos.	Mounting style	Part Number
09	4-40 UNC Front /M3 Threaded rear spacer	163 A 14439 X
15	4-40 UNC Front /M3 Threaded rear spacer	163 A 14449 X
25	4-40 UNC Front /M3 Threaded rear spacer	163 A 14459 X
37	4-40 UNC Front /M3 Threaded rear spacer	163 A 14469 X
50	4-40 UNC Front /M3 Threaded rear spacer	163 A 14479 X



SOCKET CONNECTOR		
No. of pos.	Mounting style	Part Number
09	4-40 UNC Threaded rear spacer PCB clip	164 A 16569 X
15	4-40 UNC Threaded rear spacer PCB clip	164 A 16579 X
25	4-40 UNC Threaded rear spacer PCB clip	164 A 16589 X
37	4-40 UNC Threaded rear spacer PCB clip	164 A 16599 X
50	4-40 UNC Threaded rear spacer PCB clip	164 A 16609 X
09	M3 Threaded rear spacer PCB clip	164 A 16619 X
15	M3 Threaded rear spacer PCB clip	164 A 16629 X
25	M3 Threaded rear spacer PCB clip	164 A 16639 X
37	M3 Threaded rear spacer PCB clip	164 A 16649 X
50	M3 Threaded rear spacer PCB clip	164 A 16659 X

PLUG CONNECTOR		
No. of pos.	Mounting style	Part Number
09	4-40 UNC Threaded rear spacer PCB clip	163 A 16159 X
15	4-40 UNC Threaded rear spacer PCB clip	163 A 16169 X
25	4-40 UNC Threaded rear spacer PCB clip	163 A 16179 X
37	4-40 UNC Threaded rear spacer PCB clip	163 A 16189 X
50	4-40 UNC Threaded rear spacer PCB clip	163 A 16199 X
09	M3 Threaded rear spacer PCB clip	163 A 16209 X
15	M3 Threaded rear spacer PCB clip	163 A 16219 X
25	M3 Threaded rear spacer PCB clip	163 A 16229 X
37	M3 Threaded rear spacer PCB clip	163 A 16239 X
50	M3 Threaded rear spacer PCB clip	163 A 16249 X



SOCKET CONNECTOR		
No. of pos.	Mounting style	Part Number
09	4-40 UNC Front/Threaded rear spacer PCB clip	164 A 16669 X
15	4-40 UNC Front/Threaded rear spacer PCB clip	164 A 16679 X
25	4-40 UNC Front/Threaded rear spacer PCB clip	164 A 16689 X
37	4-40 UNC Front/Threaded rear spacer PCB clip	164 A 16699 X
50	4-40 UNC Front/Threaded rear spacer PCB clip	164 A 16709 X
09	M3 Front/Threaded rear spacer PCB clip	164 A 16719 X
15	M3 Front/Threaded rear spacer PCB clip	164 A 16729 X
25	M3 Front/Threaded rear spacer PCB clip	164 A 16739 X
37	M3 Front/Threaded rear spacer PCB clip	164 A 16749 X
50	M3 Front/Threaded rear spacer PCB clip	164 A 16759 X

PLUG CONNECTOR		
No. of pos.	Mounting style	Part Number
09	4-40 UNC Front/Threaded rear spacer PCB clip	163 A 16259 X
15	4-40 UNC Front/Threaded rear spacer PCB clip	163 A 16269 X
25	4-40 UNC Front/Threaded rear spacer PCB clip	163 A 16279 X
37	4-40 UNC Front/Threaded rear spacer PCB clip	163 A 16289 X
50	4-40 UNC Front/Threaded rear spacer PCB clip	163 A 16299 X
09	M3 Front/Threaded rear spacer PCB clip	163 A 16309 X
15	M3 Front/Threaded rear spacer PCB clip	163 A 16319 X
25	M3 Front/Threaded rear spacer PCB clip	163 A 16329 X
37	M3 Front/Threaded rear spacer PCB clip	163 A 16339 X
50	M3 Front/Threaded rear spacer PCB clip	163 A 16349 X

PCB clip for .126" / 3.2 ± .004" / 0.10 mm hole diameter and .063" / 1.6 mm circuit board thickness.

PCB layout: Kat1kFUA

PCB layout: Kat1kFUA