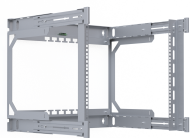
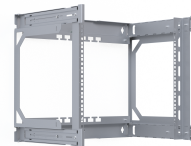
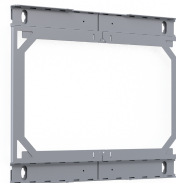
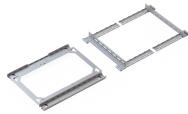
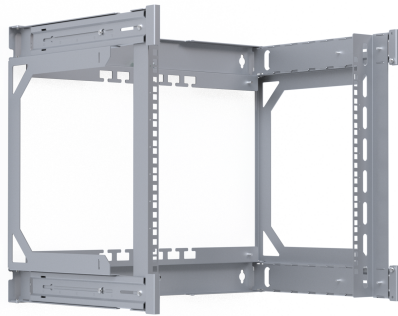


# DATASHEET

## Backframe for Wall X-Rack 400-600mm 9U 600x500mm EI-galvanized 1/3



### General data

New generation of 19" wall cabinets, which gives the installer 100% flexibility during installation.

The assembly process of the rack is done during the installation of hardware into the cabinet. All the cover plates (side walls, roof + bottom and front door) can be installed on the final end of the job.

By ordering the back frame separately, you can wait to order cover plates and front door until the color are decided.

Back frame for 19" wall housing "X-Rack", depth-adjustable to 400, 450, 500, 550 and 600 mm

19" profiles depth-adjustable

100% Protection against installation error due to equal roof and bottom

Maximum load 60 kg for static equal distribution

Protection degree IP20 when using the outer cover

EI-galvanised steel plates for higher quality

# DATASHEET

## Backframe for Wall X-Rack 400-600mm 9U 600x500mm EI-galvanized 1/3

Arrangement for cable strain relief in top and bottom  
Side walls + roof and bottom elements can be ordered separately  
M5 screw pin, for grounding connection in all 4 frame corners

### General data:

Modular spacing 19" inch, 482,6 mm  
Material & surface inner parts EI-galvanised Z275, steel plate  
Degree of protection IP20  
Maximum load 60 kg  
Width 600 mm  
Height 9U:500 mm / 12U: 600 mm / 15U: 766 mm  
Depth Adjustable 400 mm, 450 mm, 500 mm, 550 mm, 600 mm  
Wall hanging support Keyholes for 2 x M8 bolts in upper and lower profile  
Packaging Package no 1 of 3, recycled cartonboard

### Technical properties

Cabinet Series	19" Wall Housing X-Rack, un-assembled
Cable entry roof/floor	Open frame
Degree of protection	IP20
Demountable	False
Frame	Locking mechanism
Installation depth min. - max.	310 - 510 mm
Material	Steel
Model	With permanent frame
Modular spacing	482,6 mm (19 inch)
Mounting level	Front side
Number of cartons	1
Number of doors	0
Packaging	1 carton
Scope of delivery	1x Cabinet
Structure/Use	Open rear frame of the X-Rack wall-mount enclosure for single use. Includes 2 x 19" front-mounted profiles "Angle bracket set for additional stabilization available, part no. WGX-WKS01 Additional 19" rear-mounted profiles available, part no. WGX-PROxx
Surface finishing	Zinc coated
Type of profile rail	L-shaped
Type of ventilation	Passive
With earthing	True