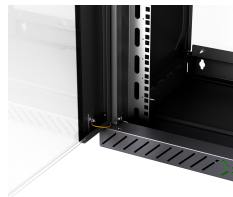


# DATASHEET

## Wall X-Rack Glass door 15U black RAL9005 3/3



### General data

New generation of 19" wall cabinets, which gives the installer 100% flexibility during installation. The assembly process of the rack is done during the installation of hardware into the cabinet. All the cover elements (side walls, roof + bottom + front door) can be installed on the final end of the job.

Glass front door with steel frame and window of certified safety glass (thickness 4 mm)

Door stop left- or right sided possible

Adjustable door hinges to secure correct leveling of the door.

Protection degree IP20

4 mm<sup>2</sup> Grounding wire and additional electrical connection between steel parts

### Notes:

Quarter turn Lock with key is exchangeable for RUKO/ASSA with compact turning handle Art.-No. 699989.

The Lock is supplied with the cover package for the cabinet (packaging 2 of3). See e.g. WGX-OxxGR.G

### General Data:

Material & surface front door Steel frame with hardened and tempered glass

Front door hinges Easy pin hinges for left or right side, spring-loaded, adjustable leveling of the door

Degree of protection IP20

# DATASHEET

## Wall X-Rack Glass door 15U black RAL9005 3/3

Width 600 mm

Height 9U: 500 mm / 12U: 600 mm / 15U: 766 mm

Packaging Package no.3 of 3 : recycled cartonboard

Paint finish RAL7035, light grey / RAL9005, jet black

### Technical properties

Cabinet Series	19" Wall Housing X-Rack, un-assembled
Degree of protection	IP20
Door opening angle	> 180 °
For Cabinet Width	600 mm
Material	Glass
Model	Stop door
Number of height units (U)	9
Profile half-cylinder exchangeable	False
Scope of delivery	Tür, inkl. Scharnieren, Handgriff, Erdungskabel, Schlüssel
Structure/Use	Glastür, einteilig, mit Vorreiberverschluss
Surface finishing	Steel elements powder-coated
Type of closure	Single-point latch locking
Version as glazed door	True