

# Special heatsinks (Multiple mounting)

Applications:  
(Cases)

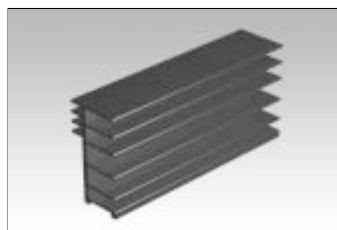


TO 220



TO 218 (TOP 3)

- for clip mounting with clip types:  
MC 780 (see page 7, Insulating and mounting accessoires)
- space saving for applications on eurocards

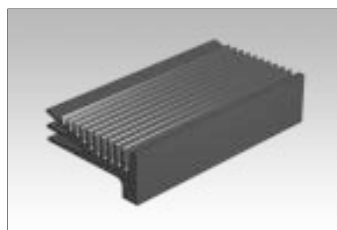
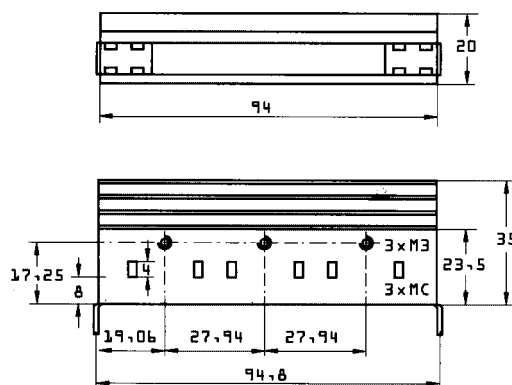
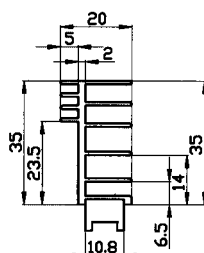


Type  $R_{thK}$  (K/W)  
PR 142/94/SE/M3 4,2

- for stable mounting using a 4-point soldering technique
- Aluminium, black anodized
- Basic extrusion see page 3 (Extruded heatsinks Standard)

Applications: (Cases)

TO 220, TO 218 (TOP 3)

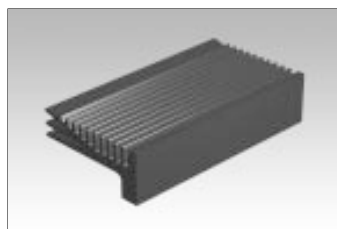
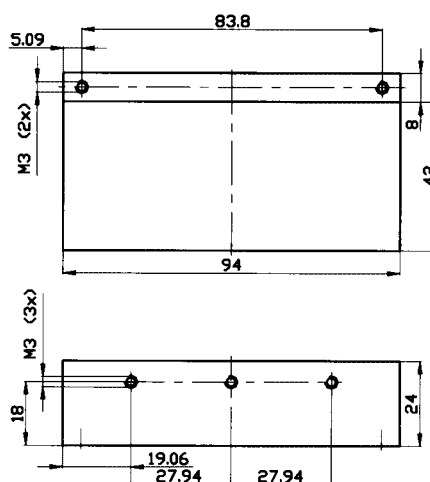
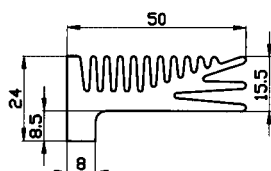


Type  $R_{thK}$  (K/W)  
PR 144/94/SE/M3 3,8

- Aluminium, black anodized
- Basic extrusion see page 5 (Extruded heatsinks Standard)

Applications: (Cases)

TO 220, TO 218 (TOP 3)



Type  $R_{thK}$  (K/W)  
PR 133/94/SE/M3 3,6

- Aluminium, black anodized
- Basic extrusion see page 5 (Extruded heatsinks Standard)

Applications: (Cases)

TO 220, TO 218 (TOP 3)

