



High density, small form factor
audio, video and RS232 distribution

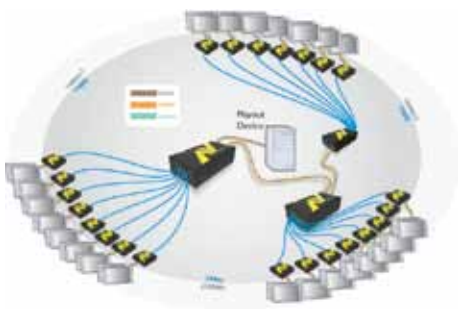
ADDERLINK AV200 Series

The professional choice for audio, video and RS232 distribution

PRODUCT IN BRIEF

Distribute crisp, clear and bright VGA, CD quality audio and transparent RS232 from a single PC to 64 screens up to 300m/1000ft from a play out device. For Digital Signage and Media Streaming applications.

The AdderLink AV200 Series is a range of audiovisual extenders delivering high video resolutions, superb quality audio and RS232 up to 300m using standard CATx cable (x=5,5e,6,7). The innovative design allows for flexible audiovisual distribution, management, control and interaction with the display devices which can be expanded to grow in line with project developments. Consisting of 5 interchangeable units, the AdderLink AV200 Series makes the design of digital signage and narrow casting applications cost effective, flexible and easy to plan.



FEATURES

Video performance

Industry leading resolutions of 1600x1200 are achievable at 200m (650ft) and 1280x1024 at 300m (1000ft).

Display Management via RS232

Included with AV200 transmitters, the Display Management Software gives users control and interaction with display devices over the integrated RS232 ports. This allows for bi-directional and automated communication with individual screens, groups of screens or all screens at the same time.

Video compensation and brightness control

The AdderLink AV units can apply a high level of signal compensation and brightness correction that ensures the image is crisp, clear and bright over long distances.

Audio

Digital audio transmission delivers high fidelity; click-less audio for speakers and microphones.

Integrated DeSkew

The AdderLink AV201R has integrated skew correction with a 300MHz bandwidth, meaning that it is more than powerful enough to counteract the negative effects of the skew.

Rack options

Both transmitter and receiver units can be used standalone or can be mounted into a 3U chassis, (up to 16 200T, 200R and 201T units or 8 204T and 208T units).



AdderLink ALAV200T (transmitter) and ALAV200R (receiver)

- Sold individually or as a pair (AdderLink AV 200R)
- Local port on transmitter to connect local screen, speakers and serial or for cascading
- AdderLink AV 200R duplicates input from transmitter allowing for 2 video and 2 audio outputs
- Control or manage either screen via RS232

AdderLink ALAV204T and ALAV208T (transmitters)

- Extends a single high-resolution video, high fidelity audio and RS232 signals to 4 (AV204T) or 8 (AV208T) different receivers
- Local port to connect local screen, speakers and serial or to cascade to other AdderLink AV 204T or AV 208T transmitter units

AdderLink ALAV201R (receiver) unit

- Duplicates input from transmitter allowing for 2 video, 2 audio outputs
- Control or manage either screen via RS232

ADDERLINK AV200 Series

The professional choice for audio, video and RS232 distribution



ABOUT ADDER

Adder is a leading developer and thought leader in connectivity solutions. Adder's advanced range of KVM switches, extenders and IP solutions enable the control of local, remote and global IT systems across the enterprise. Adder's Digital Signage solutions provide the simplicity of on time installations within the budget and offers a no-nonsense straightforward approach to system configuration. The AV Series is ideal for use in variety of multimedia venues:

- Retail;
- Hospitality
- Medical;
- Education;
- Transportation.

The company distributes its products in more than 60 countries through a network of distributors, resellers and OEMs. Adder has offices in the United States, United Kingdom, Germany, the Netherlands, Sweden, China and Singapore.

To find out more, visit:
<http://www.adder.com>.

SERIES PRODUCTS

Adder offer a vast range of products to suit your needs. Other products you may be interested in include:

ADDERLink AV200R
Dual output receiver



ADDERLink AV200T
Transmitter



ADDERLink AV201R
Dual output receiver with Deskew



ADDERLink AV204T
4 line transmitter, cascadeable



ADDERLink AV208T
8 line transmitter, cascadeable



TECHNICAL SPECIFICATIONS

Video Resolutions

1600 x 1200 at distances up to 200 metres/650 feet,
1280 x 1024 at distances up to 300 metres/1000 feet.

Extension distance

Up to 300 meters/1000 feet using CATx (x=5,6,7).

Extension technology

Differential analogue signalling for video signals.

Cable Equalisation

Finely adjustable cable equalisation amplifiers enable the video sharpness and brightness to be independently adjusted using the dials on the side of the receiver units.

Integral DeSkew (AdderLink ALAV201R only)

Skew compensation adjustments can be made using the two rotary dials on the AdderLink AV201R receiver unit. The first dial affects the relationship between green and blue colour signals, the second red and green. The cable skew is produced due to wire length differences between different twisted pairs in a CATx cable that arise due to the different twist rates used to reduce signalling cross talk. The amount of cable skew seen depends on the cable type used and the cable length. The AdderLink AV201R provides up to 62ns of DeSkew with a fine 2ns resolution. This means that high-resolution video can be accurately DeSkewed even at long cable distances. The DeSkew supports 300MHz bandwidths, which means that the DeSkew function does not adversely affect the video quality.

Display Management via RS232

Included with AV200 transmitters, the Display Management Software gives users control and interaction with display devices over the integrated RS232 ports. This allows for bi-directional and automated communication with individual screens, groups of screens or all screens at the same time.

Indicators

The remote and local units are fitted with two indicators; red shows the presence of power into the module, green indicates the presence of a video input.

Audio

Transmitted as digital signals to ensure high fidelity and low noise levels. Phase locked sampling clocks ensure that there are no unwanted clicks when no sound is being played.

Rack mount options

Both the local (computer-end) and remote (display-end) units may be rack mounted in the AdderLink AV Series rack mount chassis. The chassis enable 16 units (ALAV200T, 200R and 201R) or 8 units (ALAV204T and 208T) to be mounted in 3U of 19-inch rack space. The units are rack mounted using the optional rack mount faceplate.

Connectors (ALAV200T;ALAV204T;ALAV208T)

1 x blue 15-pin high-density D-type female connector for video input, 1 x light green 3.5mm audio jack for audio input, 1 x 9-pin D-type female for serial input, 1 x blue 15-pin high-density D-type female connector for video output and 1 x light green 3.5mm audio jack for audio output.

ALAV200T: 1 x RJ45 connector for CATx cable connection. 2.5mm DC jack for power adapter.

ALAV208T: 1 x 9-pin D-type male for serial output or cascade to additional AdderLink AV 204T or AV 208T. 8 x RJ45 connectors for CATx cable connections. 2.5mm DC jack for power adapter.

ALAV204T: 1 x 9-pin D-type male for serial output or cascade to additional AdderLink AV 204T

ORDERING INFORMATION

Pair with Audio, Video & RS232: **ALAV200P-XX**
Receiver with Audio, Video & RS232 (no skew): **ALAV200R-XX**
Transmitter with Audio, Video & RS232: **ALAV200T-XX**
Receiver with Audio, Video & RS232 (with skew): **ALAV201R-XX**
4 way Transmitter with Audio, Video & RS232: **ALAV204T**
8 way Transmitter with Audio, Video & RS232: **ALAV208T**

XX = Mains Lead Country Code:
UK = United Kingdom
US = United States
EURO = Europe
AUS = Australia

ADDITIONAL ACCESSORIES

19" 3U rack mount chassis: **ALAV-RMK-CHASSIS**
Universal fascia & mounting kit: **ALAV-RMK-FASCIA**
Universal fascia & mounting kit for 204T and 208T units: **ALAV-RMK-FASCIA2**
9M/9F Serial cable: **CAB-9M/9F-2M**
Tricoax video 15HDD M-M 2m: **VSC18**
Serial "Y" splitter cable 100mm: **VSC19**
2 m 3.5mm stereo plug to plug audio cable: **VSC22**
19" 4U rack mount chassis: **RMK-ALAV204-208-UNIVERSAL**

or AV 208T. 4 x RJ45 connectors for CATx cable connections. 2.5mm DC jack for power adapter.

Connectors (ALAV 200R;ALAV201R)

2 x blue 15-pin high-density D-type female connector for video output, 2 x light green 3.5mm audio jack for audio output and 1 x 9-pin D-type male for serial output (use splitter cable for dual serial connections). 1 x RJ45 connector for CATx cable connection. 2.5mm DC jack for power adapter.

Physical

AdderLink AV 200T, 200R and 201R Metal case (steel and stainless steel), 98mm x 95mm x 25mm.
AdderLink AV 204T, 208T Metal case (steel and stainless steel), 185mm x 65mm x 51mm

Power

All AdderLink AV units are powered by an external 5.3V DC, 2A power supply with IEC power cable connection. A country specific power cord is provided. Alternatively 4 units can be powered using a 5.3V DC, 4amp power supply and the Adder "Squid" cable.

Spike suppression

All AdderLink AV units are fitted with spike suppression circuits.

Display Data Channel

DDC signalling is supported to enable the computer to communicate with the local monitor and thus configure its video card for optimal operation.

Approvals

FCC class A, CE marked

Power Supply

- Operating Voltage: 100-240VAC
- Power Frequency: 50-60Hz
- Usage: 5VDC at 500mA

Temperature Tolerance

0-40C (32 to 104F)

Humidity Tolerance

5 to 60% non-condensing

© Copyright 2010 Adder Technology Ltd. All brand names and trademarks are the property of their respective owners. AH-alav200series_v1.ID