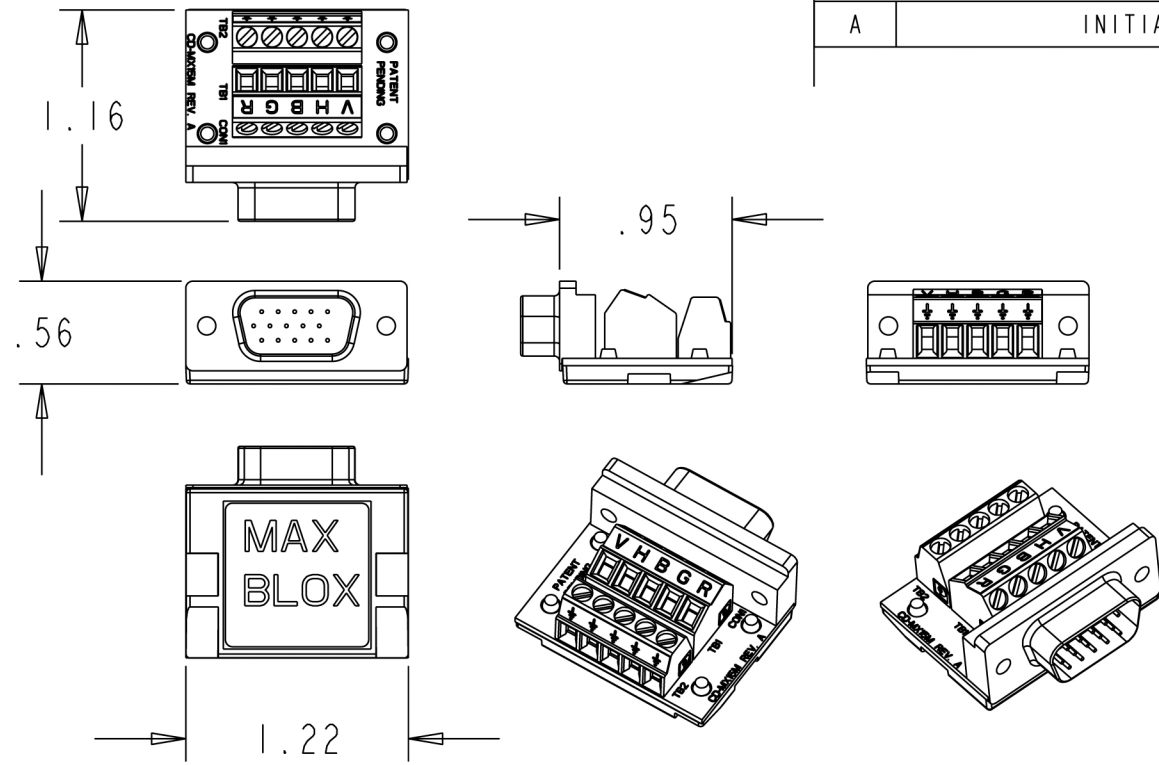


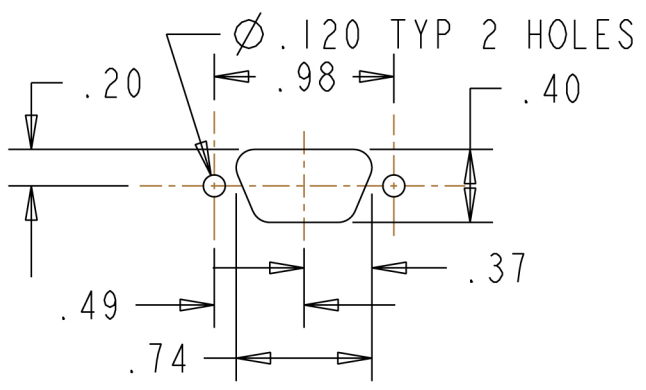
REV.	DESCRIPTION	DATE	APRVD
A	INITIAL RELEASE	05/03/08	---



**WIRING TABLE**

CON	TB
1	TB1-5
2	TB1-4
3	TB1-3
4	TB2-1,2
6	TB2-5
7	TB2-4
8	TB2-3
10	TB2-1,2
11	TB2-1,2
13	TB1-2
14	TB1-1

**SUGGESTED CUTOUT**



**NOTE**

- 1) MAXBLOX SERIES CONNECTOR WILL MATE WITH HOOD AND HALF HOOD
- 2) TERMINAL BLOCKS WILL ACCOMODATE WIRE GA 30AWG-16AWG
- 3) #4-40 JACKSCREWS AND SHOULDER SCREWS SUPPLIED IN BAG

<b>PART DIMENSIONAL TOLERANCES</b>			
ALL DIMENSIONS ARE INCHES [mm]			
.XX = $\pm .015$ [0.4mm]			
.XXX = $\pm .005$ [0.1mm]			
ANGULAR = $\pm 1/2^\circ$			
<b>DO NOT SCALE FROM DRAWING</b>		CUSTOMER DRAWING, 15 PIN MALE	
DRAWN: CWD	DATE: 05/03/08		
APRVD: ---	DATE: MM/DD/YYYY	RoHS COMPLIANT? YES	SIZE A
FIRST PRODUCT: -----		DOC# AB4003	REVISION A
DRAWING SCALE   1 = 1	FILENAME: CD-MX15M	SHEET # 1 OF 1	DATE 5/03/08