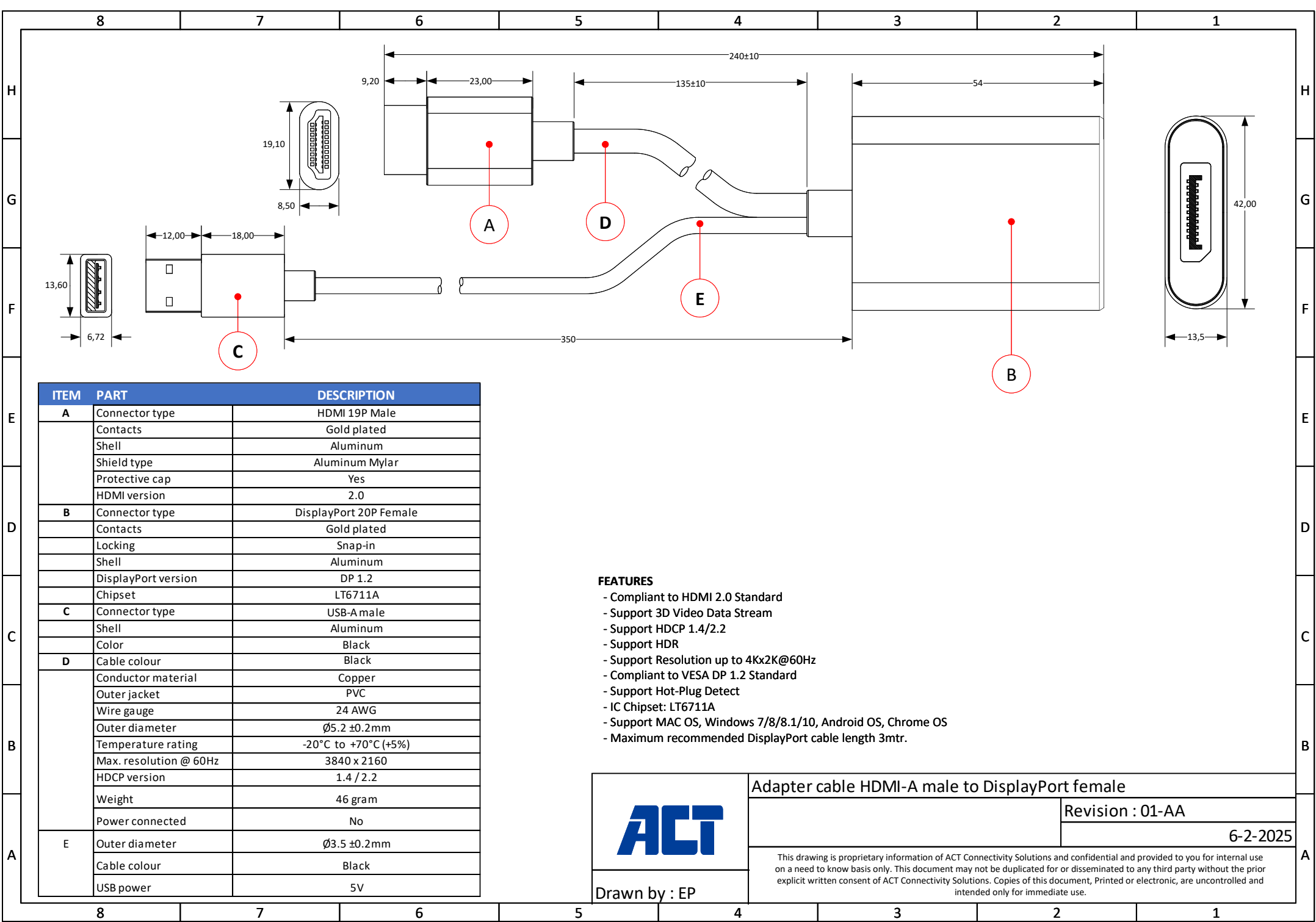



ACT Connectivity Solutions – Koolhovenstraat 1E – 3772MT – Barneveld – The Netherlands



ITEM	PART	DESCRIPTION
A	Connector type	HDMI 19P Male
	Contacts	Gold plated
	Shell	Aluminum
	Shield type	Aluminum Mylar
	Protective cap	Yes
	HDMI version	2.0
B	Connector type	DisplayPort 20P Female
	Contacts	Gold plated
	Locking	Snap-in
	Shell	Aluminum
	DisplayPort version	DP 1.2
	Chipset	LT6711A
C	Connector type	USB-A male
	Shell	Aluminum
	Color	Black
D	Cable colour	Black
	Conductor material	Copper
	Outer jacket	PVC
	Wire gauge	24 AWG
	Outer diameter	Ø5.2 ±0.2mm
	Temperature rating	-20°C to +70°C (+5%)
	Max. resolution @ 60Hz	3840 x 2160
	HDCP version	1.4 / 2.2
	Weight	46 gram
	Power connected	No
E	Outer diameter	Ø3.5 ±0.2mm
	Cable colour	Black
	USB power	5V

FEATURES

- Compliant to HDMI 2.0 Standard
- Support 3D Video Data Stream
- Support HDCP 1.4/2.2
- Support HDR
- Support Resolution up to 4Kx2K@60Hz
- Compliant to VESA DP 1.2 Standard
- Support Hot-Plug Detect
- IC Chipset: LT6711A
- Support MAC OS, Windows 7/8/8.1/10, Android OS, Chrome OS
- Maximum recommended DisplayPort cable length 3mtr.



Adapter cable HDMI-A male to DisplayPort female

Revision : 01-AA

6-2-2025

This drawing is proprietary information of ACT Connectivity Solutions and confidential and provided to you for internal use on a need to know basis only. This document may not be duplicated for or disseminated to any third party without the prior explicit written consent of ACT Connectivity Solutions. Copies of this document, Printed or electronic, are uncontrolled and intended only for immediate use.

Drawn by : EP