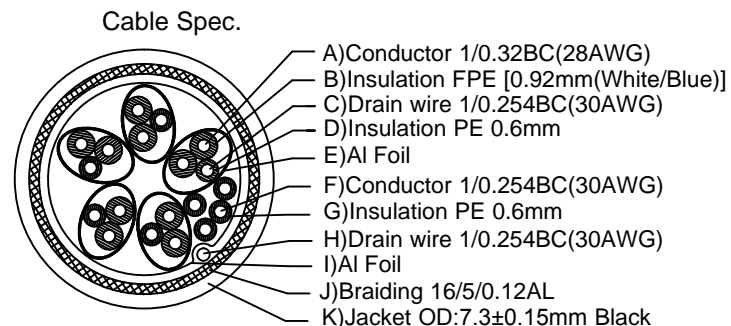
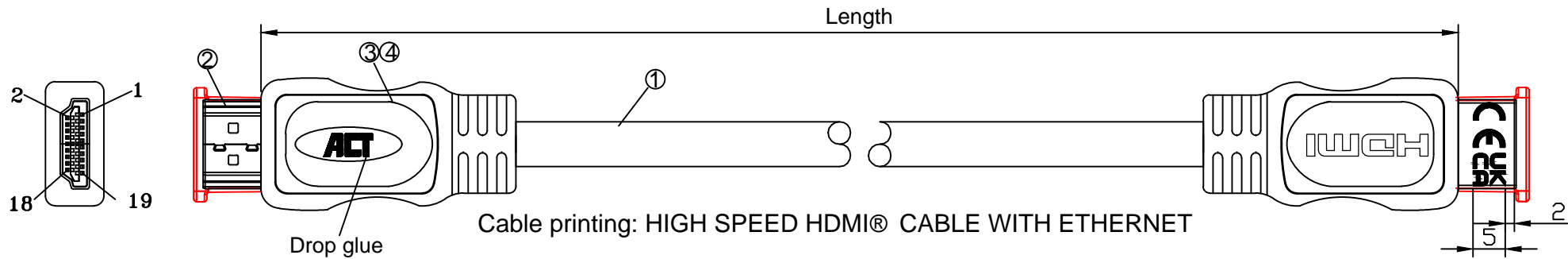
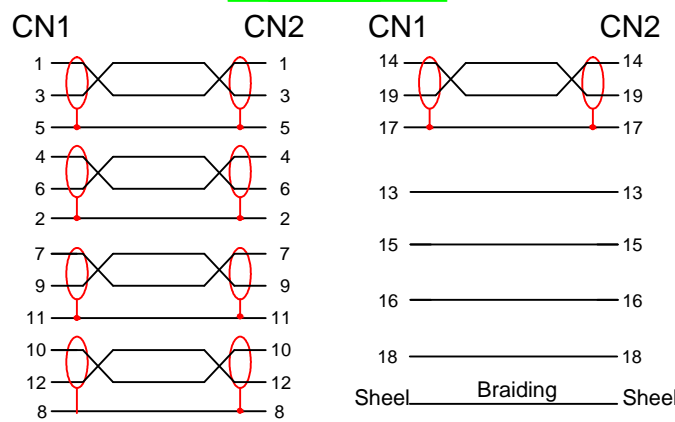


REV.	REVISED DESCRIPTION	DATE	CHECKED
A0	FIRST RELEASE	2021/08/19	



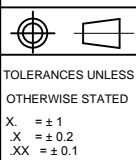
Signal Assignment



- Remark:
- 100% Open/Short Test
  - Conductive Resistance:5ohms MAX
  - Insulation Resistance:10M ohm MIN.
  - HI-POT:DC 300V/10MS.
  - The product is Reach/RoHS 2.0 compliant.
  - Support 1080P/3D/4K\*2K@60Hz

Item NO.	Length(m)
AC3800	1.5m

ITEM	DESCRIPTIONS & SPECIFICATIONS	QTY	REMARK
⑤	HDMI Protective Cap, PE	2PCS	
④	External Mold Outer Mould 45P PVC, Black	2PCS	
③	Inernal Mold Inner Mould PE	2PCS	
②	Connector HDMI A PLUG PIN, Gold-Plated	2PCS	
①	Cable 28AWG 2.0V (19+1BC) HDMI Cable OD:7.3mm (0.32BC+FPE)*1P+D+AL ] *5C + (0.254BC+HDPE)*4C + AL + D + B PVCOD7.3mm		



ACT			
ERP NO.:		SAMPLE DWG NO.:	
ZG No.:	ZG-1003	REVISION	A0
CUSTOMER:		UNIT	mm
CUSTOMER P/N:		SCALE	NO
DESCRIPTION	HDMI 2.0V 19+1BC	PAGE NO	1/1
APPROVAL		DATE	2021/08/19
CHECKED		DRAWN	